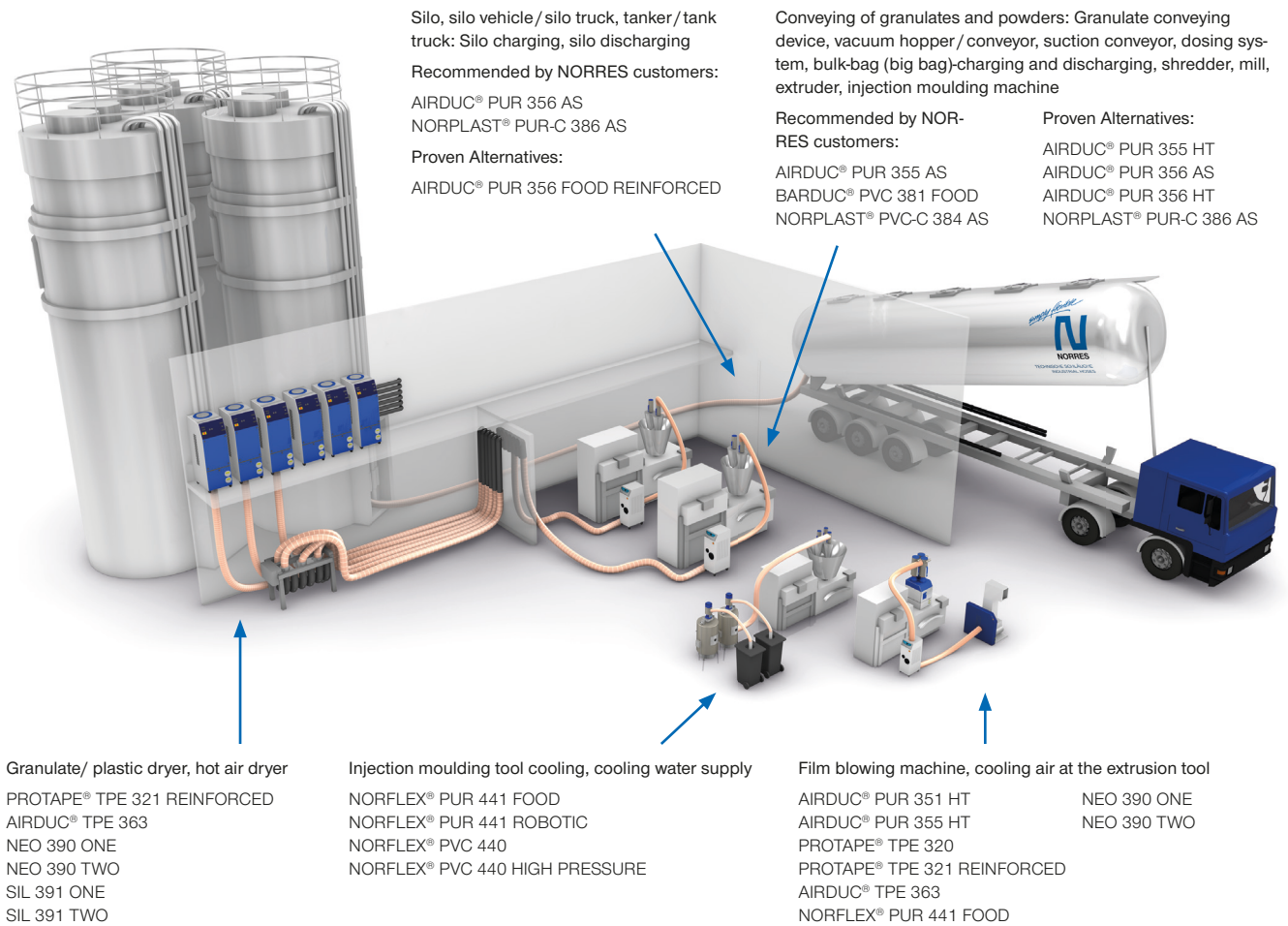


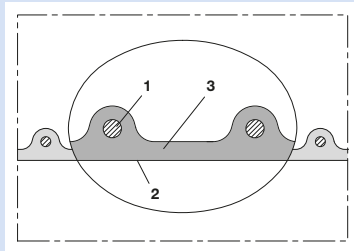
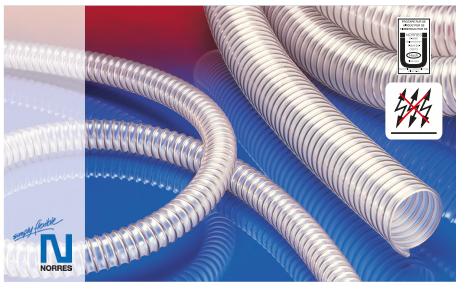


NORRES INDUSTRIAL HOSES

PLASTICS INDUSTRY







Antistatic polyurethane hose, heavy, microbe resistant + flame-retardant

Applications

- flexible hose/ ducting for high throughput of abrasive powder, bulk material, granulate and for gases
- plastic industry, conveying of granulates and powders: granulate conveying equipment, vacuum hopper/ conveyor, suction conveyor, dosing system, bulk-bag (big bag)-charging and discharging, shredder, mill, extruder, injection moulding machine
- printed circuit board drilling machine (PCB)
- powder spraying, powder coating: e.g. printing industry
- offset printing machine: air supply, air supply cabinet
- industrial vacuum cleaners, vacuum cleaners
- explosion hazard area
- agricultural industry, conveying of seed and fertilizers: seeding machine, seed drill, drilling machine
- agricultural industry: pneumatic grain conveyor
- construction industry, road milling machine
- raw material conveying hose for powders, granulates, sand, quartz, gravel, shards and chips/shavings
- compressor, side channel blower, vacuum pump, pressure pump, pump

- paper mill, paper and pulp industry, packaging machine: edge strip suctioning system/ edge trim exhaust systems
- surface preparation: shot blasting/ sand blasting recovery e.g. at blasting chamber, ship yard, stripping machine, flooring preparation machine, grinding machine
- municipal vehicle: sweeper, sweeping machine
- municipal vehicle: lawn mower, slope mower, leaf blower/ leaf collector
- vacuum lifting equipment, vacuum handling system

Properties

- heavy duty
- highly abrasion resistant
- increased pressure and vacuum resistance
- microbe resistant
- good resistance to oil, gasoline and chemicals
- very good low temperature flexibility
- flame-retardant according to: UL94-V2
- flame-retardant according to: DIN 4102-B1
- permanently antistatic wall: in accordance with ISO 8031 electrical and surface resistance $<10^9 \Omega$ and in accordance with TRGS 727 $<2,5 * 10^6 \Omega$
- in accordance with ATEX 2014/34/EU (1999/92/EC) and German TRGS 727: pneumatic transport of flammable dusts and bulk materials (Zone 20, 21, 22 inside), aspiration of

- combustible dusts (Zone 22 inside), for conveying for flammable liquids (inside zone 0, 1, 2), for conveying for non-flammable liquids, for use in zone 1 and 2 (gases), for use in zone 0 (gases)
- conforms to the safety regulations of the German Wood Trade Association
- according to DIN 26057 Type 3
- conforms to RoHS guideline

Temperature Range

- 40°C to 90°C
- short time to 125°C

Design, Material

- AIRDUC® profile hose
- spring steel wire firmly embedded in wall
 - wall: permanently antistatic premium ester-polyurethane (Pre-PUR®)
 - wall thickness 1,4 - 1,5 mm approx.

Delivery variants

- further diameters and lengths available on request
- transparent (standard)
- special colours: partially coloured, completely coloured
- customer-specific branding

I.D.	O.D.	Pressure DIN 26057 (50% Elongation) bar	Vacuum DIN 26057 (axially fixed) bar	Bending Radius mm	Weight kg/m	Dimensions in Stock m	Order No.
in / mm	mm						
- / 13	20	5,000 (11,3)	1,000 (1,00)	14	0,140	5 10 15	355-0013-0000
5/8 / 16	23	4,900 (9,35)	1,000 (1,00)	15	0,160	5 10 15	355-0016-0000
- / 18	25	4,405 (8,38)	1,000 (1,00)	16	0,170	5 10 15	355-0018-0000
- / 20	27	4,720 (9,00)	1,000 (1,00)	17	0,230	5 10 15 20	355-0020-0000
- / 22	29	4,330 (8,24)	1,000 (1,00)	18	0,250	5 10 15	355-0022-0000
1 / 25	32	3,855 (7,31)	1,000 (1,00)	20	0,280	5 10 15 20	355-0025-0000
- / 30	40	4,000 (7,59)	1,000 (1,00)	25	0,420	5 10 15	355-0030-0000
1,25 / 32	42	3,770 (7,15)	1,000 (1,00)	26	0,440	5 10 15 20	355-0032-0000
1,36 / 35	45	3,470 (6,56)	1,000 (1,00)	28	0,480	5 10 15	355-0035-0000
1,5 / 38	48	3,215 (6,07)	1,000 (1,00)	29	0,520	5 10 15 20	355-0038-0000
- / 40	50	3,065 (5,78)	1,000 (1,00)	30	0,540	5 10 15 20	355-0040-0000
- / 42	52	2,905 (5,53)	0,910 (1,00)	31	0,560	5 10 15	355-0042-0000
1,75 / 44-45	55	2,745 (5,16)	0,915 (1,00)	33	0,600	5 10 15	355-0045-0000
2 / 50-51	60	2,485 (4,67)	0,825 (1,00)	35	0,660	5 10 15 20 25	355-0050-0000
- / 55	65	2,270 (4,26)	0,750 (1,00)	38	0,720	5 10 15	355-0055-0000
2,36 / 60	70	2,090 (3,91)	0,685 (1,00)	40	0,780	5 10 15 20	355-0060-0000
2,5 / 63-65	75	1,935 (3,62)	0,635 (1,00)	43	0,840	5 10 15 20	355-0065-0000

Overpressure and underpressure are recommended threshold operating values, products can be subjected to higher loads upon request. The bending radius is measured through the inside of the hose arch. Additional technical data at www.norres.com. The right to make technical modifications is reserved. All values determined at 20°C and are approx. data.



I.D.	O.D.	Pressure DIN 26057 (50% Elongation) bar	Vacuum DIN 26057 (axially fixed) bar	Bending Radius	Weight	Dimensions in Stock	Order No.
in / mm	mm			mm	kg/m	m	
- / 70	81	1,800 (3,37)	0,540 (1,00)	62	0,980	5 10 15	355-0070-0000
3 / 75-76	86	1,685 (3,15)	0,505 (1,00)	66	1,050	5 10 15	355-0075-0000
- / 80	91	1,585 (2,96)	0,475 (1,00)	69	1,110	5 10 15	355-0080-0000
3,5 / 89-90	101	1,415 (2,63)	0,420 (0,88)	76	1,250	5 10 15	355-0090-0000
4 / 100-102	111	1,275 (2,38)	0,390 (0,93)	83	1,490	5 10 15	355-0100-0000
- / 110	121	1,160 (2,16)	0,355 (0,77)	90	1,630	5 10 15	355-0110-0000
4,5 / 114-115	126	1,115 (2,07)	0,340 (0,71)	94	1,680	5 10 15	355-0115-0000
4,72 / 120	131	1,070 (1,99)	0,325 (0,65)	97	1,770	5 10 15	355-0120-0000
5 / 125-127	136	1,025 (1,91)	0,315 (0,60)	101	1,840	5 10 15	355-0125-0000
- / 130	141	0,985 (1,84)	0,300 (0,56)	104	1,910	5 10 15	355-0130-0000
5,5 / 140	151	0,920 (1,71)	0,280 (0,48)	111	2,030	5 10 15	355-0140-0000
6 / 150-152	161	0,860 (1,59)	0,270 (0,53)	118	2,410	5 10 15	355-0150-0000
6,3 / 160	171	0,805 (1,50)	0,255 (0,47)	125	2,560	5 10 15	355-0160-0000
- / 170	181	0,760 (1,41)	0,240 (0,41)	132	2,720	5 10 15	355-0170-0000
- / 175	186	0,735 (1,37)	0,230 (0,39)	136	2,790	5 10 15	355-0175-0000
7 / 178-180	191	0,715 (1,33)	0,225 (0,37)	139	2,870	5 10 15	355-0180-0000
8 / 200-203	213	0,645 (1,20)	0,150 (0,36)	156	3,120	5 10 15	355-0200-0000
- / 225	238	0,575 (1,07)	0,130 (0,28)	174	3,500	5 10	355-0225-0000
- / 250	263	0,520 (0,96)	0,120 (0,22)	191	3,880	5 10 15	355-0250-0000
10 / 254	267	0,510 (0,95)	0,115 (0,21)	194	3,950	5 10 15	355-0254-0000
- / 275	288	0,470 (0,87)	0,110 (0,18)	209	4,255	5 10	355-0275-0000
11 / 280	293	0,465 (0,86)	0,105 (0,17)	212	4,330	5 10	355-0280-0000
- / 300	313	0,435 (0,80)	0,090 (0,20)	226	5,160	5 10	355-0300-0000
12 / 305	318	0,425 (0,79)	0,090 (0,19)	230	5,245	5 10	355-0305-0000
- / 315	328	0,410 (0,76)	0,085 (0,17)	237	5,410	5 10	355-0315-0000
- / 325	338	0,400 (0,74)	0,085 (0,16)	244	5,580	5 10	355-0325-0000
13 / 330	343	0,395 (0,73)	0,080 (0,15)	247	5,670	5 10	355-0330-0000
- / 350	363	0,370 (0,69)	0,075 (0,13)	261	6,000	5 10	355-0350-0000
- / 400	413	0,325 (0,60)	0,070 (0,12)	296	8,020	5 10	355-0400-0000
- / 450	463	0,290 (0,54)	0,065 (0,09)	331	9,000	5 10	355-0450-0000
- / 500	514	0,260 (0,48)	0,055 (0,07)	367	10,000	5 10	355-0500-0000

Overpressure and underpressure are recommended threshold operating values, products can be subjected to higher loads upon request. The bending radius is measured through the inside of the hose arch. The right to make technical modifications is reserved. All values determined at 20°C and are approx. data. Additional technical data at www.norres.com/en/technology/

Accessories



CLAMP 212

CLAMP 216

CLAMP 212 EC

CLAMP 217

CLAMP 213

CONNECT 228

Overpressure and underpressure are recommended threshold operating values, products can be subjected to higher loads upon request. The bending radius is measured through the inside of the hose arch. Additional technical data at www.norres.com. The right to make technical modifications is reserved. All values determined at 20°C and are approx. data.



CONNECT SAFETY CLAMP ASSEMBLY 231



CONNECT PRESS ASSEMBLY 232



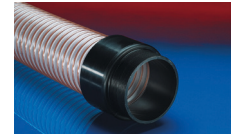
CONNECT MOULD ASSEMBLY 233



CONNECT THREAD FITTING 234



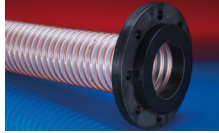
CONNECT 240 + 241



CONNECT 242



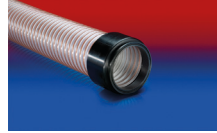
CONNECT 243



CONNECT 244



CONNECT 245 VAC-TRUCK



CONNECT 245



CONNECT 246

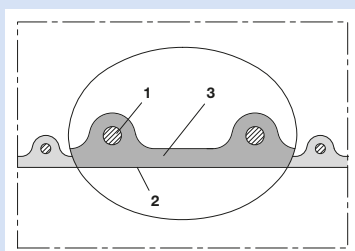
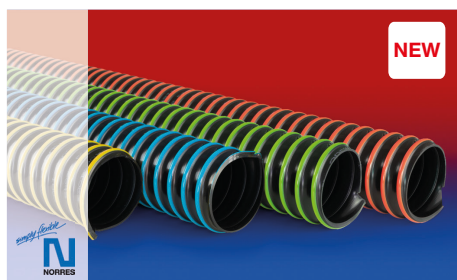


CONNECT 223



CONNECT 270-271

Overpressure and underpressure are recommended threshold operating values, products can be subjected to higher loads upon request. The bending radius is measured through the inside of the hose arch. Additional technical data at www.norres.com. The right to make technical modifications is reserved. All values determined at 20°C and are approx. data.



Antistatic polyurethane hose, heavy, microbe resistant

Applications

- flexible hose/ ducting for high throughput of abrasive powder, bulk material, granulate and for gases
- plastic industry, conveying of granulates and powders: granulate conveying equipment, vacuum hopper/ conveyor, suction conveyor, dosing system, bulk-bag (big bag)-charging and discharging, shredder, mill, extruder, injection moulding machine
- printed circuit board drilling machine (PCB)
- powder spraying, powder coating: e.g. printing industry
- offset printing machine: air supply, air supply cabinet
- industrial vacuum cleaners, vacuum cleaners
- explosion hazard area
- agricultural industry, conveying of seed and fertilizers: seeding machine, seed drill, drilling machine
- agricultural industry: pneumatic grain conveyer
- construction industry, road milling machine
- raw material conveying hose for powders, granulates, sand, quartz, gravel, shards and chips/ shavings
- compressor, side channel blower, vacuum pump, pressure pump, pump

- paper mill, paper and pulp industry, packaging machine: edge strip suctioning system/ edge trim exhaust systems
- surface preparation: shot blasting/ sand blasting recovery e.g. at blasting chamber, ship yard, stripping machine, flooring preparation machine, grinding machine
- municipal vehicle: sweeper, sweeping machine
- municipal vehicle: lawn mower, slope mower, leaf blower/ leaf collector
- vacuum lifting equipment, vacuum handling system

Properties

- heavy duty
- highly abrasion resistant
- increased pressure and vacuum resistance
- microbe resistant
- good resistance to oil, gasoline and chemicals
- very good low temperature flexibility
- permanently antistatic wall: in accordance with ISO 8031 electrical and surface resistance $<10^9 \Omega$ and in accordance with TRGS 727 $<2,5 * 10^8 \Omega$
- in accordance with ATEX 2014/34/EU (1999/92/EC) and German TRGS 727: pneumatic transport of flammable dusts and bulk materials (Zone 20, 21, 22 inside), aspiration of combustible dusts (Zone 22 inside), for conveying

for flammable liquids (inside zone 0, 1, 2), for conveying for non-flammable liquids, for use in zone 1 and 2 (gases), for use in zone 0 (gases)

- according to DIN 26057 Type 3
- conforms to RoHS guideline

Temperature Range

- 40°C to 90°C
- short time to 125°C

Design, Material

AIRDUC® profile hose

- spring steel wire firmly embedded in wall
- wall: permanently antistatic premium ester-polyurethane (Pre-PUR®)
- wall thickness 1,4 - 1,5 mm approx.

Delivery variants

- further diameters and lengths available on request
- customer-specific branding
- Available in 5m, 10m and 15m lengths
- Wall black and colored helix: blue, green, red, yellow (standard)
- further colors on request

I.D. in / mm	O.D. mm	Pressure DIN 26057 (50% Elongation) bar	Vacuum DIN 26057 (axially fixed) bar	Bending Radius mm	Weight kg/m	Minimum Quantity m	Order No.
black + green							
1,25 / 32	42	3,770 (7,15)	1,000 (1,00)	26	0,440	150	355-0032-0997
1,5 / 38	48	3,215 (6,07)	1,000 (1,00)	29	0,520	150	355-0038-0997
- / 40	50	3,065 (5,78)	1,000 (1,00)	30	0,540	150	355-0040-0997
2 / 50-51	60	2,485 (4,67)	0,825 (1,00)	35	0,660	150	355-0050-0997
2,36 / 60	70	2,090 (3,91)	0,685 (1,00)	40	0,780	150	355-0060-0997
2,5 / 63-65	75	1,935 (3,62)	0,635 (1,00)	43	0,840	150	355-0065-0997
- / 70	81	1,800 (3,37)	0,540 (1,00)	62	0,980	150	355-0070-0997
3 / 75-76	86	1,685 (3,15)	0,505 (1,00)	66	1,050	100	355-0075-0997
- / 80	91	1,585 (2,96)	0,475 (1,00)	69	1,110	100	355-0080-0997
- / 85	96	1,545 (2,85)	0,465 (0,95)	73	1,205	100	355-0085-0997
4 / 100-102	111	1,275 (2,38)	0,390 (0,93)	83	1,490	100	355-0100-0997
5 / 125-127	136	1,025 (1,91)	0,315 (0,60)	101	1,840	100	355-0125-0997
5,5 / 140	151	0,920 (1,71)	0,280 (0,48)	111	2,030	80	355-0140-0997
6 / 150-152	161	0,860 (1,59)	0,270 (0,53)	118	2,410	80	355-0150-0997
6,3 / 160	171	0,805 (1,50)	0,255 (0,47)	125	2,560	80	355-0160-0997
8 / 200-203	213	0,645 (1,20)	0,150 (0,36)	156	3,120	60	355-0200-0997

Overpressure and underpressure are recommended threshold operating values, products can be subjected to higher loads upon request. The bending radius is measured through the inside of the hose arch. Additional technical data at www.norres.com. The right to make technical modifications is reserved. All values determined at 20°C and are approx. data.



I.D.	O.D.	Pressure DIN 26057 (50% Elongation) bar	Vacuum DIN 26057 (axially fixed) bar	Bending Radius mm	Weight kg/m	Minimum Quantity m	Order No.
in / mm	mm						
black + yellow							
1,25 / 32	42	3,770 (7,15)	1,000 (1,00)	26	0,440	150	355-0032-0998
1,5 / 38	48	3,215 (6,07)	1,000 (1,00)	29	0,520	150	355-0038-0998
- / 40	50	3,065 (5,78)	1,000 (1,00)	30	0,540	150	355-0040-0998
2 / 50-51	60	2,485 (4,67)	0,825 (1,00)	35	0,660	150	355-0050-0998
2,36 / 60	70	2,090 (3,91)	0,685 (1,00)	40	0,780	150	355-0060-0998
2,5 / 63-65	75	1,935 (3,62)	0,635 (1,00)	43	0,840	150	355-0065-0998
- / 70	81	1,800 (3,37)	0,540 (1,00)	62	0,980	150	355-0070-0998
3 / 75-76	86	1,685 (3,15)	0,505 (1,00)	66	1,050	100	355-0075-0998
- / 80	91	1,585 (2,96)	0,475 (1,00)	69	1,110	100	355-0080-0998
- / 85	96	1,545 (2,85)	0,465 (0,95)	73	1,205	100	355-0085-0998
4 / 100-102	111	1,275 (2,38)	0,390 (0,93)	83	1,490	100	355-0100-0998
5 / 125-127	136	1,025 (1,91)	0,315 (0,60)	101	1,840	100	355-0125-0998
5,5 / 140	151	0,920 (1,71)	0,280 (0,48)	111	2,030	80	355-0140-0998
6 / 150-152	161	0,860 (1,59)	0,270 (0,53)	118	2,410	80	355-0150-0998
6,3 / 160	171	0,805 (1,50)	0,255 (0,47)	125	2,560	80	355-0160-0998
8 / 200-203	213	0,645 (1,20)	0,150 (0,36)	156	3,120	60	355-0200-0998
black + red							
1,25 / 32	42	3,770 (7,15)	1,000 (1,00)	26	0,440	150	355-0032-0999
1,5 / 38	48	3,215 (6,07)	1,000 (1,00)	29	0,520	150	355-0038-0999
- / 40	50	3,065 (5,78)	1,000 (1,00)	30	0,540	150	355-0040-0999
2 / 50-51	60	2,485 (4,67)	0,825 (1,00)	35	0,660	150	355-0050-0999
2,36 / 60	70	2,090 (3,91)	0,685 (1,00)	40	0,780	150	355-0060-0999
2,5 / 63-65	75	1,935 (3,62)	0,635 (1,00)	43	0,840	150	355-0065-0999
- / 70	81	1,800 (3,37)	0,540 (1,00)	62	0,980	150	355-0070-0999
3 / 75-76	86	1,685 (3,15)	0,505 (1,00)	66	1,050	100	355-0075-0999
- / 80	91	1,585 (2,96)	0,475 (1,00)	69	1,110	100	355-0080-0999
- / 85	96	1,545 (2,85)	0,465 (0,95)	73	1,205	100	355-0085-0999
4 / 100-102	111	1,275 (2,38)	0,390 (0,93)	83	1,490	100	355-0100-0999
5 / 125-127	136	1,025 (1,91)	0,315 (0,60)	101	1,840	100	355-0125-0999
5,5 / 140	151	0,920 (1,71)	0,280 (0,48)	111	2,030	80	355-0140-0999
6 / 150-152	161	0,860 (1,59)	0,270 (0,53)	118	2,410	80	355-0150-0999
6,3 / 160	171	0,805 (1,50)	0,255 (0,47)	125	2,560	80	355-0160-0999
8 / 200-203	213	0,645 (1,20)	0,150 (0,36)	156	3,120	60	355-0200-0999
black + blue							
1,25 / 32	42	3,770 (7,15)	1,000 (1,00)	26	0,440	150	355-0032-0996
1,5 / 38	48	3,215 (6,07)	1,000 (1,00)	29	0,520	150	355-0038-0996
- / 40	50	3,065 (5,78)	1,000 (1,00)	30	0,540	150	355-0040-0996
2 / 50-51	60	2,485 (4,67)	0,825 (1,00)	35	0,660	150	355-0050-0996
2,36 / 60	70	2,090 (3,91)	0,685 (1,00)	40	0,780	150	355-0060-0996
2,5 / 63-65	75	1,935 (3,62)	0,635 (1,00)	43	0,840	150	355-0065-0996
- / 70	81	1,800 (3,37)	0,540 (1,00)	62	0,980	150	355-0070-0996
3 / 75-76	86	1,685 (3,15)	0,505 (1,00)	66	1,050	100	355-0075-0996
- / 80	91	1,585 (2,96)	0,475 (1,00)	69	1,110	100	355-0080-0996
- / 85	96	1,545 (2,85)	0,465 (0,95)	73	1,205	100	355-0085-0996
4 / 100-102	111	1,275 (2,38)	0,390 (0,93)	83	1,490	100	355-0100-0996
5 / 125-127	136	1,025 (1,91)	0,315 (0,60)	101	1,840	100	355-0125-0996
5,5 / 140	151	0,920 (1,71)	0,280 (0,48)	111	2,030	80	355-0140-0996
6 / 150-152	161	0,860 (1,59)	0,270 (0,53)	118	2,410	80	355-0150-0996

Overpressure and underpressure are recommended threshold operating values, products can be subjected to higher loads upon request. The bending radius is measured through the inside of the hose arch. Additional technical data at www.norres.com. The right to make technical modifications is reserved. All values determined at 20°C and are approx. data.



I.D. in / mm	O.D. mm	Pressure DIN 26057 (50% Elongation) bar	Vacuum DIN 26057 (axially fixed) bar	Bending Radius mm	Weight kg/m	Minimum Quantity m	Order No.
6,3 / 160	171	0,805 (1,50)	0,255 (0,47)	125	2,560	80	355-0160-0996
8 / 200-203	213	0,645 (1,20)	0,150 (0,36)	156	3,120	60	355-0200-0996

Accessories



CLAMP 212



CLAMP 216



CLAMP 212 EC



CLAMP 217



CLAMP 213



CONNECT 228



CONNECT SAFETY
CLAMP ASSEMBLY
231



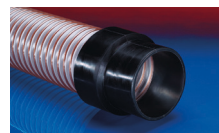
CONNECT PRESS
ASSEMBLY 232



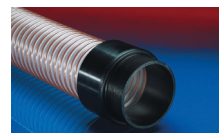
CONNECT MOULD
ASSEMBLY 233



CONNECT THREAD
FITTING 234



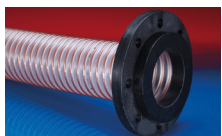
CONNECT 240 + 241



CONNECT 242



CONNECT 243



CONNECT 244



CONNECT 245



CONNECT 245 VAC-
TRUCK



CONNECT 246

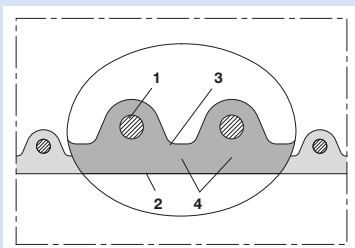


CONNECT 223



CONNECT 270-271

Overpressure and underpressure are recommended threshold operating values, products can be subjected to higher loads upon request. The bending radius is measured through the inside of the hose arch. Additional technical data at www.norres.com. The right to make technical modifications is reserved. All values determined at 20°C and are approx. data.



Antistatic polyurethane hose, super-heavy, microbe resistant

Applications

- hose/ ducting for high throughput of extremely abrasive bulk material, granulate and stone
- plastic industry, conveying of granulates and powders: granulate conveying equipment, vacuum hopper/ conveyor, suction conveyor, dosing system, bulk-bag (big bag)-charging and discharging, shredder, mill, extruder, injection moulding machine
- suction vehicles: roof gravelling, roof gravel conveying
- vacuum truck, suction vehicle, dry suction truck: industrial cleaning, furnace cleaning
- suction excavator
- explosion hazard area
- agricultural industry: pneumatic grain conveyer
- concrete pump: outlet hose, discharge hose
- construction industry: rock drill, rock drilling machine
- raw material conveying hose for powders, granulates, sand, quartz, gravel, shards and chips/shavings
- compressor, side channel blower, vacuum pump, pressure pump, pump
- paper mill, paper and pulp industry, packaging machine: edge strip suctioning system/ edge trim exhaust systems

- surface preparation: shot blasting/ sand blasting recovery e.g. at blasting chamber, ship yard, stripping machine, flooring preparation machine, grinding machine
- silo, silo vehicle/ silo truck, tanker/ tank truck: silo charging, silo discharging
- silo, silo vehicle/ silo truck, tanker/ tank truck: conveying of wood pellets, plastic granulate, plastic powder

Properties

- super-heavy duty
- extremely abrasion-resistant with reinforcement underneath wire and narrow hose pitch
- very high pressure, vacuum and compression resistance
- microbe resistant
- good resistance to oil, gasoline and chemicals
- very good low temperature flexibility
- permanently antistatic wall: in accordance with ISO 8031 electrical and surface resistance $<10^9 \Omega$ and in accordance with TRGS 727 $<2,5 * 10^8 \Omega$
- in accordance with ATEX 2014/34/EU (1999/92/EC) and German TRGS 727: pneumatic transport of flammable dusts and bulk materials (Zone 20, 21, 22 inside), aspiration of combustible dusts (Zone 22 inside), for conveying

- for flammable liquids (inside zone 0, 1, 2), for conveying for non-flammable liquids, for use in zone 1 and 2 (gases), for use in zone 0 (gases)
- according to DIN 26057 Type 4
- conforms to RoHS guideline

Temperature Range

- -40°C to 90°C
- short time to 125°C

Design, Material

- AIRDUC® profile hose
1. spring steel wire firmly embedded in wall
 2. wall: permanently antistatic premium ester-polyurethane (Pre-PUR®)
 3. wall thickness 2,0 to 2,5 mm approx.
 4. reinforcement of the primary abrasion areas

Delivery variants

- further diameters and lengths available on request
- transparent (standard)
- special colours: full coloured
- customer-specific branding

I.D.	O.D.	Over-pressure	Under-pressure	Bending Radius	Weight	Dimensions in Stock	Order No.
in / mm	mm	bar	bar	mm	kg/m	m	
1,25 / 32	43	5,235	1,000	90	0,680	10 15	356-0032-0000
1,5 / 38	49	4,475	1,000	104	0,790	10 15	356-0038-0000
- / 40	51	4,270	1,000	109	0,820	10 15	356-0040-0000
1,75 / 45	56	3,825	1,000	129	0,910	10 15 20	356-0045-0000
- / 50	61	3,470	1,000	134	1,000	10 15	356-0050-0000
2 / 51	62	3,200	1,000	134	1,020	10 15	356-0051-0000
- / 55	66	3,170	1,000	151	1,090	10 15	356-0055-0000
2,36 / 60	71	2,920	1,000	156	1,180	10 15	356-0060-0000
2,5 / 63-65	74	2,810	1,000	163	1,230	10 15	356-0063-0000
- / 65	76	2,705	1,000	169	1,270	10 15	356-0065-0000
- / 70	82	2,520	1,000	186	1,370	10 15	356-0070-0000
- / 75	87	2,360	1,000	195	1,460	10 15	356-0075-0000
3 / 76	88	2,355	1,000	195	1,470	10 15	356-0076-0000
- / 80	92	2,220	1,000	205	1,550	10 15	356-0080-0000
- / 90	103	2,195	1,000	250	2,060	10 15	356-0090-0000
- / 100	113	1,980	1,000	272	2,270	10 15	356-0100-0000
4 / 102	115	1,890	1,000	272	2,310	10 15	356-0102-0000
- / 110	123	1,805	1,000	300	2,480	10 15	356-0110-0000
4,5 / 115	128	1,730	0,975	317	2,580	10 15	356-0115-0000

Overpressure and underpressure are recommended threshold operating values, products can be subjected to higher loads upon request. The bending radius is measured through the inside of the hose arch. Additional technical data at www.norres.com. The right to make technical modifications is reserved. All values determined at 20°C and are approx. data.



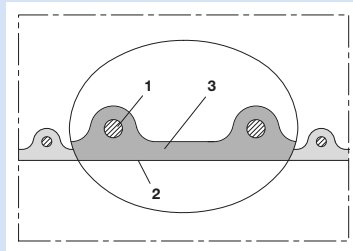
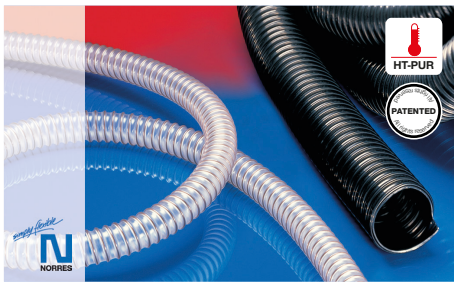
I.D.	O.D.	Over-pressure	Under-pressure	Bending Radius	Weight	Dimensions in Stock	Order No.
in / mm	mm	bar	bar	mm	kg/m	m	
4,72 / 120	133	1,660	0,930	330	2,690	10 15	356-0120-0000
- / 125	138	1,595	0,895	336	2,800	10 15 20	356-0125-0000
5 / 127	140	1,565	0,890	336	2,840	10 15	356-0127-0000
- / 130	143	1,535	0,860	355	2,900	10 15	356-0130-0000
5,5 / 140	153	1,430	0,800	400	3,110	10 15	356-0140-0000
- / 150	163	1,335	0,745	435	3,680	10 15	356-0150-0000
6 / 152	165	1,305	0,835	435	3,720	10 15	356-0152-0000
6,3 / 160	173	1,255	0,700	470	3,910	10 15	356-0160-0000
- / 170	183	1,180	0,660	600	4,150	10 15	356-0170-0000
- / 175	188	1,150	0,640	700	4,260	10 15	356-0175-0000
- / 180	193	1,120	0,620	830	4,380	10 15	356-0180-0000
- / 200	214	1,010	0,560	950	5,940	10 15	356-0200-0000
8 / 203	216	0,955	0,550	950	6,020	10 15	356-0203-0000
- / 225	239	0,900	0,495	1175	6,650	10	356-0225-0000
- / 250	264	0,810	0,445	1300	7,350	2,5 5 10	356-0250-0000
- / 275	289	0,735	0,405	1453	8,070	2,5 5 10	356-0275-0000
- / 300	314	0,675	0,375	1575	8,780	2,5 5 10	356-0300-0000

Overpressure and underpressure are recommended threshold operating values, products can be subjected to higher loads upon request. The bending radius is measured through the inside of the hose arch. The right to make technical modifications is reserved. All values determined at 20°C and are approx. data. Additional technical data at www.norres.com/en/technology/

Accessories



Overpressure and underpressure are recommended threshold operating values, products can be subjected to higher loads upon request. The bending radius is measured through the inside of the hose arch. Additional technical data at www.norres.com. The right to make technical modifications is reserved. All values determined at 20°C and are approx. data.



High-temperature hose, heavy

Applications

- flexible hose/ ducting for high throughput of warm abrasive powder, bulk material, granulate and for warm gases
- plastic industry, conveying of granulates and powders: granulate conveying equipment, vacuum hopper/ conveyor, suction conveyor, dosing system, bulk-bag (big bag)-charging and discharging, shredder, mill, extruder, injection moulding machine
- film blowing machine, cooling air at the extrusion tool
- offset printing machine: air supply, air supply cabinet
- textile industry, steam soaking: steam iron, industrial ironing machine, smoothing iron
- raw material conveying hose for powders, granulates, sand, quartz, gravel, shards and chips/ shavings

- compressor, side channel blower, vacuum pump, pressure pump, pump

Properties

- heavy duty
- highly abrasion resistant
- very good heat resistance (better than comparable TPE and Neoprene)
- increased pressure and vacuum resistance
- good resistance to oil, gasoline and chemicals
- very good low temperature flexibility
- according to DIN 26057 Type 3
- conforms to RoHS guideline

Temperature Range

- 40°C to 125°C
- short time to 150°C

Design, Material

AIRDUC® profile hose

- spring steel wire firmly embedded in wall
- wall: patented special premium high-temperature polyurethane HT-PUR (Pre-PUR®)
- wall thickness 1,4 - 1,5 mm approx.

Delivery variants

- further diameters and lengths available on request
- transparent (standard)
- black (standard)
- customer-specific branding

I.D. in / mm	O.D. mm	Over- pressure bar	Under- pressure bar	Bending Radius mm	Weight kg/m	Dimensions in Stock m	Order No.
Colour black							
1 / 25	32	3,375	0,980	25	0,280	10 15	355-0025-1015
1,25 / 32	42	3,300	1,000	32	0,440	10 15	355-0032-1015
1,5 / 38	48	2,815	0,910	36	0,520	10 15	355-0038-1015
- / 40	50	2,685	0,865	38	0,540	10 15	355-0040-1015
2 / 50-51	60	2,175	0,690	44	0,660	10 15	355-0050-1015
- / 55	65	2,370	0,635	38	0,720	10 15	355-0055-1015
2,36 / 60	70	1,830	0,575	51	0,780	10 15	355-0060-1015
2,5 / 63-65	75	1,695	0,530	54	0,840	10 15	355-0065-1015
- / 70	81	1,575	0,465	77	0,980	10 15	355-0070-1015
3 / 75-76	86	1,475	0,435	81	1,050	10 15	355-0075-1015
- / 80	91	1,385	0,410	85	1,110	10 15	355-0080-1015
4 / 100-102	111	1,115	0,355	103	1,490	10 15	355-0100-1015
5 / 125-127	136	0,900	0,285	125	1,840	10 15	355-0125-1015
6 / 150-152	161	0,750	0,260	147	2,410	10 15	355-0150-1015
8 / 200-203	213	0,565	0,130	194	3,120	10	355-0200-1015
Colour transparent							
1,25 / 32	42	3,300	1,000	32	0,440	10 15	355-0032-3040
1,5 / 38	48	2,815	0,910	36	0,520	10 15	355-0038-3040
- / 40	50	2,685	0,865	38	0,540	10 15	355-0040-3040
2 / 50-51	60	2,175	0,690	44	0,660	10 15	355-0050-3040
2,36 / 60	70	1,830	0,575	51	0,780	10 15	355-0060-3040
2,5 / 63-65	75	1,695	0,530	54	0,840	10 15	355-0065-3040

Overpressure and underpressure are recommended threshold operating values, products can be subjected to higher loads upon request. The bending radius is measured through the inside of the hose arch. Additional technical data at www.norres.com. The right to make technical modifications is reserved. All values determined at 20°C and are approx. data.



I.D.	O.D.	Over- pressure	Under- pressure	Bending Radius	Weight	Dimensions in Stock	Order No.
in / mm	mm	bar	bar	mm	kg/m	m	
- / 70	81	1,575	0,465	77	0,980	10 15	355-0070-3040
- / 80	91	1,385	0,410	85	1,110	10 15	355-0080-3040
4 / 100-102	111	1,115	0,355	103	1,490	10 15	355-0100-3040

Overpressure and underpressure are recommended threshold operating values, products can be subjected to higher loads upon request. The bending radius is measured through the inside of the hose arch. The right to make technical modifications is reserved. All values determined at 20°C and are approx. data. Additional technical data at www.norres.com/en/technology/

Accessories



CLAMP 212



CLAMP 216



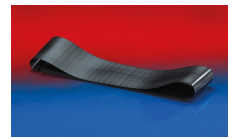
CLAMP 212 EC



CLAMP 217



CLAMP 213



CONNECT 228



CONNECT SAFETY
CLAMP ASSEMBLY
231



CONNECT PRESS
ASSEMBLY 232



CONNECT MOULD
ASSEMBLY 233

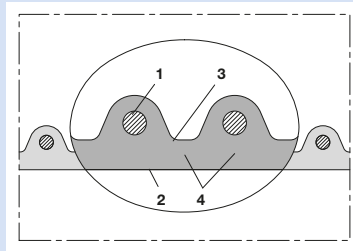


CONNECT THREAD
FITTING 234



CONNECT 270-271
FITTING 234

Overpressure and underpressure are recommended threshold operating values, products can be subjected to higher loads upon request. The bending radius is measured through the inside of the hose arch. Additional technical data at www.norres.com. The right to make technical modifications is reserved. All values determined at 20°C and are approx. data.



High-temperature hose, super-heavy

Applications

- flexible hose/ ducting for high throughput of warm abrasive powder, bulk material, granulate and for warm gases
- plastic industry, conveying of granulates and powders: granulate conveying equipment, vacuum hopper/ conveyor, suction conveyor, dosing system, bulk-bag (big bag)-charging and discharging, shredder, mill, extruder, injection moulding machine
- raw material conveying hose for powders, granulates, sand, quartz, gravel, shards and chips/ shavings
- compressor, side channel blower, vacuum pump, pressure pump, pump
- silo, silo vehicle/ silo truck, tanker/ tank truck: silo charging, silo discharging

Properties

- super-heavy duty
- extremely abrasion-resistant with reinforcement underneath wire and narrow hose pitch
- very good heat resistance (better than comparable TPE and Neoprene)
- very high pressure, vacuum and compression resistance
- good resistance to oil, gasoline and chemicals
- very good low temperature flexibility
- according to DIN 26057 Type 4
- conforms to RoHS guideline

Temperature Range

- 40°C to 125°C
- short time to 150°C

Design, Material

AIRDUC® profile hose

- spring steel wire firmly embedded in wall
- wall: patented special premium high-temperature polyurethane HT-PUR (Pre-PUR®)
- wall thickness 2,0 to 2,5 mm approx.
- reinforcement of the primary abrasion areas

Delivery variants

- further diameters and lengths available on request
- black (standard)
- customer-specific branding

I.D.	O.D.	Over-pressure	Under-pressure	Bending Radius	Weight	Dimensions in Stock	Order No.
in / mm	mm	bar	bar	mm	kg/m	m	
- / 50	61	3,615	1,000	134	1,000	10 15	356-0050-1015
2 / 51	62	3,505	1,000	134	1,020	10 15	356-0051-1015
2,36 / 60	71	3,045	1,000	156	1,180	10 15	356-0060-1015
2,5 / 63	74	2,725	1,000	163	1,240	10 15	356-0063-1015
- / 70	82	2,630	1,000	186	1,370	10 15	356-0070-1015
- / 75	87	2,460	1,000	195	1,460	10 15	356-0075-1015
3 / 76	88	2,455	1,000	195	1,480	10 15	356-0076-1015
- / 80	92	2,315	1,000	205	1,550	10 15	356-0080-1015
4 / 102	115	1,995	1,000	272	2,310	10 15	356-0102-1015
4,72 / 120	133	1,730	0,965	330	2,690	10 15	356-0120-1015
5 / 127	140	1,705	0,935	336	2,840	10 15	356-0127-1015
6 / 152	165	1,350	0,825	435	3,720	10 15	356-0152-1015

Overpressure and underpressure are recommended threshold operating values, products can be subjected to higher loads upon request. The bending radius is measured through the inside of the hose arch. The right to make technical modifications is reserved. All values determined at 20°C and are approx. data. Additional technical data at www.norres.com/en/technology/

Accessories



CLAMP 216



CLAMP 211



CONNECT 228

Overpressure and underpressure are recommended threshold operating values, products can be subjected to higher loads upon request. The bending radius is measured through the inside of the hose arch. Additional technical data at www.norres.com. The right to make technical modifications is reserved. All values determined at 20°C and are approx. data.



CONNECT SAFETY
CLAMP ASSEMBLY
231



CONNECT PRESS
ASSEMBLY 232



CONNECT MOULD
ASSEMBLY 233

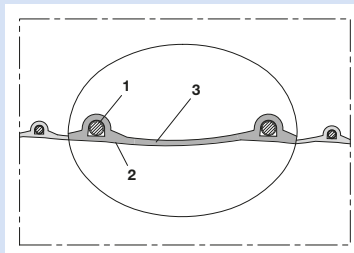


CONNECT THREAD
FITTING 234



CONNECT 245 VAC-
TRUCK

Overpressure and underpressure are recommended threshold operating values, products can be subjected to higher loads upon request. The bending radius is measured through the inside of the hose arch. Additional technical data at www.norres.com. The right to make technical modifications is reserved. All values determined at 20°C and are approx. data.



Antistatic polyurethane hose, medium-heavy, microbe resistant + flame-retardant

Applications

- flexible hose/ ducting for high throughput of abrasive powder, bulk material, granulate and for gases
- extraction unit, dedusting system, filter system, oil mist extraction
- compressor, side channel blower, vacuum pump, pressure pump, pump
- municipal vehicle: sweeper, sweeping machine
- municipal vehicle: lawn mower, slope mower, leaf blower/ leaf collector

Properties

- medium-heavy duty
- highly abrasion resistant

- increased pressure and vacuum resistance
- microbe resistant
- good resistance to oil, gasoline and chemicals
- very good low temperature flexibility
- flame-retardant according to: DIN 4102-B1
- permanently antistatic wall: in accordance with ISO 8031 electrical and surface resistance <math><10^9 \Omega</math>
- conforms to RoHS guideline

Temperature Range

- 40°C to 90°C
- short time to 125°C

Design, Material

PROTAPE® tape hose

- spring steel wire integrated in wall; plastic coated spring steel wire
- wall: permanently antistatic premium ester-polyurethane (Pre-PUR®)
- wall thickness 0,9 mm approx.

Delivery variants

- further lengths available on request
- transparent (standard)
- Imprint: <ID> antistatic + microbe resistant + flame retardant <neutral batch no.>

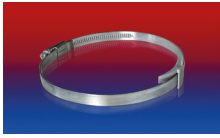
I.D. in / mm	O.D. mm	Pressure DIN 26057 (50% Elongation) bar	Vacuum DIN 26057 (axially fixed) bar	Bending Radius mm	Weight kg/m	Dimensions in Stock m	Order No.
- / 40	48	1,322 (3,92)	1,000 (1,00)	38	0,25	10	333-0040-0007
2 / 50-51	58	1,065 (3,16)	1,000 (1,00)	48	0,31	10	333-0050-0007
2,36 / 60	68	0,890 (2,64)	1,000 (1,00)	58	0,36	10	333-0060-0007
2,5 / 63-65	72	0,825 (2,44)	1,000 (1,00)	63	0,38	10	333-0065-0007
- / 70	78	0,768 (2,27)	1,000 (1,00)	68	0,42	10	333-0070-0007
3 / 75-76	83	0,718 (2,12)	1,000 (1,00)	73	0,44	10	333-0075-0007
- / 80	88	0,674 (1,99)	1,000 (1,00)	78	0,47	10	333-0080-0007
4 / 100-102	109	0,541 (1,60)	0,567 (0,71)	98	0,97	10	333-0100-0007
5 / 125-127	134	0,435 (1,28)	0,454 (0,57)	123	1,19	10	333-0125-0007
5,5 / 140	148	0,389 (1,14)	0,405 (0,50)	138	1,32	10	333-0140-0007
6 / 150-152	159	0,363 (1,07)	0,378 (0,47)	148	1,45	10	333-0150-0007
6,3 / 160	168	0,340 (1,00)	0,354 (0,45)	158	1,50	10	333-0160-0007
7 / 178-180	186	0,303 (0,89)	0,315 (0,40)	178	1,66	10	333-0180-0007
8 / 200-203	210	0,273 (0,80)	0,283 (0,36)	198	1,89	10	333-0200-0007
- / 250	258	0,219 (0,64)	0,236 (0,30)	248	2,32	10	333-0250-0007
- / 300	308	0,182 (0,54)	0,197 (0,25)	298	2,78	10	333-0300-0007

Accessories



CLAMP 212

Overpressure and underpressure are recommended threshold operating values, products can be subjected to higher loads upon request. The bending radius is measured through the inside of the hose arch. Additional technical data at www.norres.com. The right to make technical modifications is reserved. All values determined at 20°C and are approx. data.



CLAMP 210 BRIDGE
CLAMP



CLAMP 217



CLAMP 213



CONNECT 228

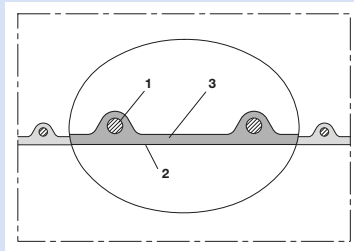
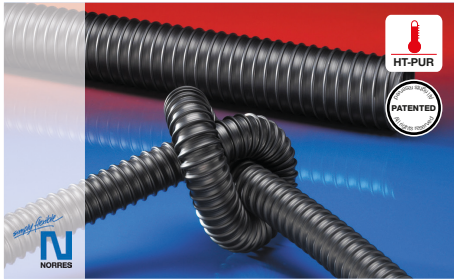


CONNECT 223



CONNECT 270-271

Overpressure and underpressure are recommended threshold operating values, products can be subjected to higher loads upon request. The bending radius is measured through the inside of the hose arch. Additional technical data at www.norres.com. The right to make technical modifications is reserved. All values determined at 20°C and are approx. data.



High-temperature hose, medium-heavy

Applications

- flexible hose/ ducting for high throughput of warm abrasive powder, bulk material, granulate and for warm gases
- film blowing machine, cooling air at the extrusion tool
- offset printing machine: air supply, air supply cabinet
- air supply: UV dryer, IR dryer
- textile industry, steam soaking: steam iron, industrial ironing machine, smoothing iron
- compressor, side channel blower, vacuum pump, pressure pump, pump

Properties

- medium-heavy duty
- highly abrasion resistant
- very good heat resistance (better than comparable TPE and Neoprene)
- good resistance to oil, gasoline and chemicals
- very good low temperature flexibility
- conforms to RoHS guideline

Temperature Range

- 40°C to 125°C
- short time to 150°C

Design, Material

AIRDUC® profile hose

- spring steel wire firmly embedded in wall
- wall: patented special premium high-temperature polyurethane HT-PUR (Pre-PUR®)
- wall thickness 1,0 mm approx.

Delivery variants

- further diameters and lengths available on request
- black (standard)
- customer-specific branding

I.D.	O.D.	Over-pressure	Under-pressure	Bending Radius	Weight	Dimensions in Stock	Order No.
in / mm	mm	bar	bar	mm	kg/m	m	
1 / 25	32	2,835	0,495	28	0,200	10 15	351-0025-1015
1,25 / 32	40	2,245	0,460	35	0,280	10 15	351-0032-1015
1,5 / 38	46	1,905	0,430	40	0,320	10 15	351-0038-1015
- / 40	48	1,815	0,420	41	0,340	10 15	351-0040-1015
1,75 / 44-45	53	1,620	0,385	45	0,380	10 15	351-0045-1015
2 / 50-51	58	1,465	0,365	49	0,410	10 15	351-0050-1015
2,36 / 60	68	1,225	0,285	56	0,490	10 15	351-0060-1015
2,5 / 63-65	73	1,135	0,255	60	0,530	10 15	351-0065-1015
- / 70	79	1,055	0,210	65	0,590	10 15	351-0070-1015
3 / 75	84	0,985	0,195	69	0,640	10 15	351-0075-1015
- / 80	89	0,925	0,175	73	0,680	10 15	351-0080-1015
3,5 / 89-90	99	0,825	0,155	80	0,750	10 15	351-0090-1015
4 / 100-102	109	0,745	0,120	88	0,970	10 15	351-0100-1015
5 / 125-127	134	0,600	0,085	107	1,200	10 15	351-0125-1015
6 / 150-152	159	0,500	0,075	126	1,520	10 15	351-0150-1015
6,3 / 160	169	0,470	0,065	134	1,610	10 15	351-0160-1015
8 / 200-203	209	0,375	0,055	165	2,000	10	351-0200-1015

Overpressure and underpressure are recommended threshold operating values, products can be subjected to higher loads upon request. The bending radius is measured through the inside of the hose arch. The right to make technical modifications is reserved. All values determined at 20°C and are approx. data. Additional technical data at www.norres.com/en/technology/

Overpressure and underpressure are recommended threshold operating values, products can be subjected to higher loads upon request. The bending radius is measured through the inside of the hose arch. Additional technical data at www.norres.com. The right to make technical modifications is reserved. All values determined at 20°C and are approx. data.



Accessories



CLAMP 212



CLAMP 212 EC



CLAMP 217



CLAMP 213

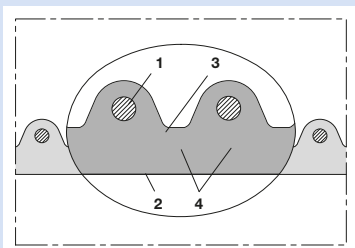
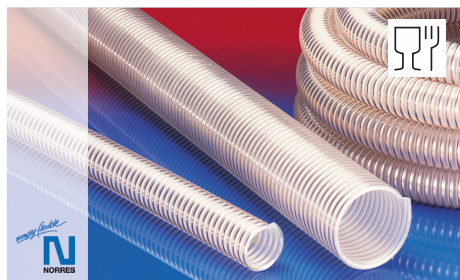


CONNECT 228



CONNECT 270-271

Overpressure and underpressure are recommended threshold operating values, products can be subjected to higher loads upon request. The bending radius is measured through the inside of the hose arch. Additional technical data at www.norres.com. The right to make technical modifications is reserved. All values determined at 20°C and are approx. data.



Food hose and pharmaceutical hose, super-heavy and reinforced

Applications

- hose/ ducting for high throughput of extremely abrasive bulk material, granulate and stone
- food industry, pharmaceutical industry: foodstuff, pharmaceutical
- conveying of dry foods e.g. rice, cereals, sugar, milk powder, powders, coffee, tea, grains, flour, frozen foods
- animal stall, animal shed: feedstuff conveying, feedstuff plant, animal feed transport
- raw material conveying hose for powders, granulates, sand, quartz, gravel, shards and chips/shavings
- silo, silo vehicle/ silo truck, tanker/ tank truck: silo charging, silo discharging
- silo, silo vehicle/ silo truck, tanker/ tank truck: conveying of wood pellets, plastic granulate, plastic powder
- silo, silo vehicle/ silo truck, tanker/ tank truck: conveying of e.g. rice, dry food, cereals, sugar,

milk powder, powders, coffee, tea, grains, flour, frozen foods

Properties

- super-heavy duty and reinforced
- extremely abrasion-resistant with reinforcement underneath wire and narrow hose pitch
- very high pressure, vacuum and compression resistance
- Approved by an independent testing laboratory for the complete hose acc. to EU-Directive 10/2011 and EC 1935/2004 and the latest EU-Directive 2015/174, food grade polyurethane, complies with: FDA 21 CFR 177.2600 and 178.2010
- Approval acc. to EU-Directive 10/2011 (food simulants A, B, C or E and D2) and EC 1935/2004
- odourless and tasteless
- microbe and hydrolysis resistant
- good resistance to oil, gasoline and chemicals
- very good low temperature flexibility
- manufacturing process acc. GMP EC 2023/2006

- conforms to RoHS guideline

Temperature Range

- -40°C to 90°C
- short time to 125°C

Design, Material

AIRDUC® profile hose

1. spring steel wire firmly embedded in wall
2. wall: special premium ether-polyurethane (Pre-PUR®)
3. wall thickness 3,0 to 3,5 mm approx.
4. reinforcement of the primary abrasion areas

Delivery variants

- further diameters and lengths available on request
- transparent (standard)
- customer-specific branding

I.D.	O.D.	Over-pressure	Under-pressure	Bending Radius	Weight	Dimensions in Stock	Order No.
in / mm	mm	bar	bar	mm	kg/m	m	
- / 50	67	4,065	1,000	189	1,490	10	356-0050-5100
2 / 51	68	3,850	1,000	192	1,500	10	356-0051-5100
2,36 / 60	77	3,455	1,000	216	1,760	10	356-0060-5100
2,5 / 63-65	80	3,330	1,000	224	1,810	10	356-0063-5100
- / 65	82	3,210	1,000	230	1,890	10	356-0065-5100
- / 75	92	2,815	1,000	257	2,040	10	356-0075-5100
3 / 76	87	2,800	1,000	259	2,080	10	356-0076-5100
- / 80	97	2,655	1,000	270	2,300	10	356-0080-5100
3,5 / 89-90	106	2,380	1,000	295	2,840	10	356-0089-5100
- / 90	107	2,380	1,000	297	2,900	10	356-0090-5100
- / 100	117	2,155	1,000	324	3,200	10	356-0100-5100
4 / 102	119	2,005	1,000	330	3,260	10	356-0102-5100
4,5 / 114-115	132	1,890	0,920	365	3,640	10	356-0115-5100
- / 125	142	1,745	0,845	392	3,950	10	356-0125-5100
5 / 127	144	1,715	0,840	398	4,010	10	356-0127-5100
- / 150	167	1,465	0,760	460	5,050	10	356-0150-5100
6 / 152	169	1,355	0,750	465	5,110	10	356-0152-5100

Overpressure and underpressure are recommended threshold operating values, products can be subjected to higher loads upon request. The bending radius is measured through the inside of the hose arch. The right to make technical modifications is reserved. All values determined at 20°C and are approx. data. Additional technical data at www.norres.com/en/technology/

Overpressure and underpressure are recommended threshold operating values, products can be subjected to higher loads upon request. The bending radius is measured through the inside of the hose arch. Additional technical data at www.norres.com. The right to make technical modifications is reserved. All values determined at 20°C and are approx. data.



Accessories

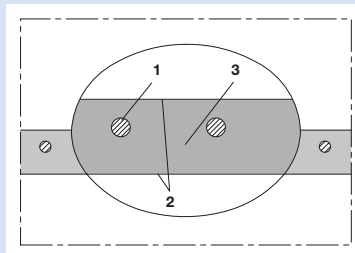


CLAMP 211



CONNECT 230

Overpressure and underpressure are recommended threshold operating values, products can be subjected to higher loads upon request. The bending radius is measured through the inside of the hose arch. Additional technical data at www.norres.com. The right to make technical modifications is reserved. All values determined at 20°C and are approx. data.



PVC hose, heavy, smooth interior and exterior, vacuum-proof

Applications

- hose/ ducting for liquids and for powder, bulk material, granulate and for gases
- vacuum conveying equipment, vacuum hopper, suction conveyor, dosing system
- plastic industry, conveying of granulates and powders: granulate conveying equipment, vacuum hopper/ conveyor, suction conveyor, dosing system, bulk-bag (big bag)-charging and discharging, shredder, mill, extruder, injection moulding machine
- airport, airplane, rail vehicle, train, railway, boat, ship/ vessel, yacht: toilet discharging/ disposal
- agricultural industry: irrigation, fertilizers, insecticides
- animal stall, animal shed: feedstuff conveying, feedstuff plant, animal feed transport
- construction industry: lowering groundwater
- caravan/ trailer, mobile home/ camper/ RV, boat, ship/ vessel, yachts: sanitary installation, water supply

- compressor, side channel blower, vacuum pump, pressure pump, pump
- paper mill, paper and pulp industry: waste water, air extraction
- industrial washing machine: washing water hose
- vacuum lifting equipment, vacuum handling system

Properties

- heavy duty
- very high pressure, vacuum and compression resistance
- Food grade wall, complies with: EU-Directive 10/2011 and EC 1935/2004 and the latest EU-Directive 2015/174, according to FDA 21 CFR, according to FDA 21 CFR, 177.1210
- good resistance to alkalis and acids
- good resistance to chemicals
- phthalate-free
- manufacturing process acc. GMP EC 2023/2006
- conforms to RoHS guideline

Temperature Range

- -20°C to 70°C
- short time to 80°C

Design, Material

- BARDUC® design
1. spring steel wire spiral embedded in wall
 2. smooth interior and exterior; wall: high grade soft PVC
 3. wall thickness 3 to 8 mm approx., depending on diameter

Delivery variants

- further diameters and lengths available on request
- transparent (standard)
- special colours: full coloured
- customer-specific branding

I.D.	O.D.	Over-pressure	Under-pressure	Bending Radius	Weight	Dimensions in Stock	Further Production Lengths	Order No.
in / mm	mm	bar	bar	mm	kg/m	m	m	
- / 10	16	7,000	0,850	25	0,150	30 60	-	381-0010-0000
- / 12	18	6,000	0,850	30	0,210	30 60	-	381-0012-0000
- / 13	19	6,000	0,850	32	0,225	30 60	-	381-0013-0000
- / 14	20	6,000	0,850	33	0,250	30 60	-	381-0014-0000
5/8 / 16	22	6,000	0,850	37	0,265	30 60	-	381-0016-0000
- / 18	25	5,000	0,850	39	0,290	30 60	-	381-0018-0000
3/4 / 19	26	5,000	0,850	41	0,310	30 60	-	381-0019-0000
- / 20	27	5,000	0,850	45	0,320	30 60	-	381-0020-0000
- / 22	29	5,000	0,850	49	0,350	30 60	-	381-0022-0000
1 / 25	32	5,000	0,850	73	0,490	30 60	-	381-0025-0000
- / 30	37	4,000	0,850	75	0,575	30 60	-	381-0030-0000
1,25 / 32	40	4,000	0,850	79	0,695	30 60	-	381-0032-0000
1,36 / 35	43	4,000	0,850	83	0,750	30 60	-	381-0035-0000
1,5 / 38	46	4,000	0,850	91	0,810	15 30	-	381-0038-0000
- / 40	49	4,000	0,850	100	0,945	15 30	-	381-0040-0000
- / 42	51	4,000	0,800	104	0,970	15 30	-	381-0042-0000
1,75 / 44-45	54	4,000	0,800	118	1,105	15 30	-	381-0045-0000
- / 48	57	4,000	0,800	126	1,250	-	15 30	381-0048-0000
2 / 50-51	59	4,000	0,800	135	1,140	15 30	-	381-0050-0000
2,36 / 60	70	3,600	0,800	170	1,680	15 30	-	381-0060-0000
2,5 / 63-65	76	3,600	0,800	228	1,795	15 30	-	381-0065-0000
- / 70	81	3,600	0,700	245	2,095	15 30	-	381-0070-0000
3 / 75-76	88	3,600	0,700	262	2,250	15 30	-	381-0076-0000

Overpressure and underpressure are recommended threshold operating values, products can be subjected to higher loads upon request. The bending radius is measured through the inside of the hose arch. Additional technical data at www.norres.com. The right to make technical modifications is reserved. All values determined at 20°C and are approx. data.



I.D.	O.D.	Over-pressure	Under-pressure	Bending Radius	Weight	Dimensions in Stock	Further Production Lengths	Order No.
in / mm	mm	bar	bar	mm	kg/m	m	m	
- / 80	93	3,600	0,700	275	2,540	10 20	-	381-0080-0000
3,5 / 89-90	103	3,600	0,700	315	2,840	10 20	-	381-0090-0000
4 / 100-102	115	3,600	0,700	413	3,350	10 20	-	381-0102-0000

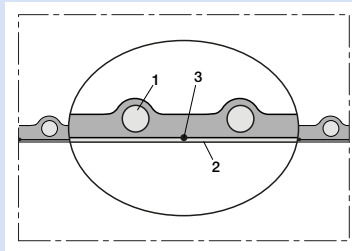
Overpressure and underpressure are recommended threshold operating values, products can be subjected to higher loads upon request. The bending radius is measured through the inside of the hose arch. The right to make technical modifications is reserved. All values determined at 20°C and are approx. data. Additional technical data at www.norres.com/en/technology/

Accessories



CLAMP 211

Overpressure and underpressure are recommended threshold operating values, products can be subjected to higher loads upon request. The bending radius is measured through the inside of the hose arch. Additional technical data at www.norres.com. The right to make technical modifications is reserved. All values determined at 20°C and are approx. data.



Antistatic polyurethane hose, heavy, grounding wire

Applications

- flexible hose/ ducting for high throughput of abrasive powder, bulk material, granulate and for gases
- vacuum conveying equipment, vacuum hopper, suction conveyor, dosing system
- plastic industry, conveying of granulates and powders: granulate conveying equipment, vacuum hopper/ conveyor, suction conveyor, dosing system, bulk-bag (big bag)-charging and discharging, shredder, mill, extruder, injection moulding machine
- explosion hazard area
- raw material conveying hose for powders, granulates, sand, quartz, gravel, shards and chips/shavings
- silos, silo vehicle/ silo truck, tanker/ tank truck: silo charging, silo discharging
- silos, silo vehicle/ silo truck, tanker/ tank truck: conveying of wood pellets, plastic granulate, plastic powder

- wood pellet heating system: conveying of wood pellets

Properties

- heavy duty
- highly abrasion resistant
- increased pressure and vacuum resistance
- good resistance to chemicals
- phthalate-free
- grounding wire for discharging of electrostatic charging
- electrical and surface resistance of the inliner <math><10^9 \Omega</math>
- in accordance with ATEX 2014/34/EU (1999/92/EC) and German TRGS 727: aspiration of combustible dust (zone 22 inside), for conveying of non-flammable liquids, for use in zone 1 and 2 (gases)
- conforms to RoHS guideline

Temperature Range

- 20°C to 70°C
- short time to 80°C

Design, Material

- NORPLAST® full plastic hose
- hard plastic spiral integrated in wall; spiral: rigid PVC
 - smooth interior; Wall: antistatic polyurethane inside layer 2,0 mm approx., exterior soft PVC
 - grounding wire

Delivery variants

- further diameters and lengths available on request
- transparent (standard)
- special colours: coloured spiral, full coloured
- customer-specific branding

I.D.	O.D.	Over-pressure	Under-pressure	Bending Radius	Weight	Dimensions in Stock	Further Production Lengths	Order No.
in / mm	mm	bar	bar	mm	kg/m	m	m	
1,25 / 32	39,0	5,000	0,700	165,4	0,450	-	15 30	386-0032-0000
1,5 / 38	46,0	5,000	0,700	195,7	0,590	15 30	-	386-0038-0000
- / 40	48,8	5,000	0,700	205,0	0,620	15 20 30	-	386-0040-0000
1,75 / 44-45	53,0	5,000	0,700	228,3	0,750	15 30	-	386-0045-0000
2 / 50-51	59,0	5,000	0,700	254,0	0,880	15 20 30	-	386-0050-0000
2,36 / 60	69,0	5,000	0,700	300,6	1,060	15 20 30	-	386-0060-0000
2,5 / 63-65	72,0	5,000	0,700	314,6	1,130	15 30	-	386-0063-0000
- / 70	79,0	5,000	0,700	347,2	1,280	15 30	-	386-0070-0000
3 / 75-76	85,0	5,000	0,700	375,1	1,460	15 30	-	386-0076-0000
- / 80	90,0	4,000	0,700	396,1	1,630	15 30	-	386-0080-0000
3,5 / 89-90	100,0	4,000	0,700	442,7	1,940	15 30	-	386-0090-0000
4 / 100-102	112,0	4,000	0,700	498,6	2,310	15 30	-	386-0102-0000

Overpressure and underpressure are recommended threshold operating values, products can be subjected to higher loads upon request. The bending radius is measured through the inside of the hose arch. The right to make technical modifications is reserved. All values determined at 20°C and are approx. data. Additional technical data at www.norres.com/en/technology/

Overpressure and underpressure are recommended threshold operating values, products can be subjected to higher loads upon request. The bending radius is measured through the inside of the hose arch. Additional technical data at www.norres.com. The right to make technical modifications is reserved. All values determined at 20°C and are approx. data.



Accessories

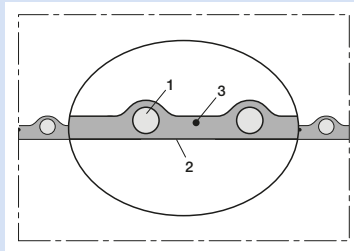
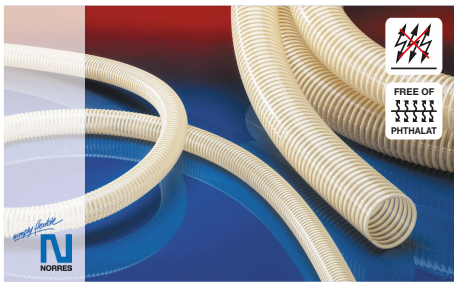


CLAMP 211



CONNECT 270-271

Overpressure and underpressure are recommended threshold operating values, products can be subjected to higher loads upon request. The bending radius is measured through the inside of the hose arch. Additional technical data at www.norres.com. The right to make technical modifications is reserved. All values determined at 20°C and are approx. data.



Antistatic PVC hose, heavy, grounding wire

Applications

- hose/ ducting for liquids and for powder, bulk material, granulate and for gases
- vacuum conveying equipment, vacuum hopper, suction conveyor, dosing system
- plastic industry, conveying of granulates and powders: granulate conveying equipment, vacuum hopper/ conveyor, suction conveyor, dosing system, bulk-bag (big bag)-charging and discharging, shredder, mill, extruder, injection moulding machine
- explosion hazard area
- wood pellet heating system: conveying of wood pellets

Properties

- heavy duty
- increased pressure and vacuum resistance

- good resistance to alkalis and acids
- good resistance to chemicals
- phthalate-free
- grounding wire for discharging of electrostatic charging
- permanently antistatic wall: in accordance with ISO 8031 electrical and surface resistance <math><10^9 \Omega</math>
- in accordance with ATEX 2014/34/EU (1999/92/EC) and German TRGS 727: aspiration of combustible dust (zone 22 inside), for conveying of non-flammable liquids, for use in zone 1 and 2 (gases)
- conforms to RoHS guideline

Temperature Range

- -5°C to 70°C

- short time to 80°C

Design, Material

NORPLAST® full plastic hose

1. hard plastic spiral integrated in wall; spiral: rigid PVC
2. smooth interior; wall: high grade soft PVC and antistatic
3. grounding wire

Delivery variants

- further diameters and lengths available on request
- transparent (standard)
- special colours: coloured spiral, full coloured
- customer-specific branding

I.D.	O.D.	Over-pressure	Under-pressure	Bending Radius	Weight	Dimensions in Stock	Further Production Lengths	Order No.
in / mm	mm	bar	bar	mm	kg/m	m	m	
- / 20	26	5,000	0,700	100,0	0,260	-	25 50	384-0020-2878
1 / 25	31	5,000	0,700	117,5	0,310	25 50	-	384-0025-2878
- / 30	36	5,000	0,700	135,0	0,370	-	25 50	384-0030-2878
1,25 / 32	39	5,000	0,700	139,0	0,400	25 50	-	384-0032-2878
1,36 / 35	42	5,000	0,700	152,5	0,450	-	25 50	384-0035-2878
1,5 / 38	45	5,000	0,700	161,0	0,530	25 50	-	384-0038-2878
- / 40	48	5,000	0,700	175,0	0,570	25 50	-	384-0040-2878
1,75 / 44-45	53	5,000	0,700	192,5	0,690	-	25 50	384-0045-2878
2 / 50-51	59	5,000	0,700	210,0	0,820	25 50	-	384-0050-2878
2,36 / 60	69	5,000	0,700	245,0	0,990	25 50	-	384-0060-2878
2,5 / 63-65	75	5,000	0,700	267,5	1,090	25 50	-	384-0065-2878
- / 70	80	5,000	0,700	285,0	1,220	25 50	-	384-0070-2878
3 / 75-76	86	5,000	0,700	302,0	1,400	25 50	-	384-0076-2878
- / 80	91	4,000	0,700	325,0	1,570	25 50	-	384-0080-2878
3,5 / 89-90	102	4,000	0,700	375,0	1,870	-	15 30	384-0090-2878
4 / 100-102	112	4,000	0,700	420,0	2,220	15 30	-	384-0100-2878
- / 110	123	4,000	0,600	465,0	2,570	-	15 30	384-0110-2878
4,72 / 120	133	3,000	0,600	590,0	2,820	-	15 30	384-0120-2878
5 / 125-127	138	3,000	0,550	617,5	3,020	-	15 30	384-0125-2878
6 / 150-152	163	3,000	0,500	705,0	4,330	-	10 20	384-0150-2878

Overpressure and underpressure are recommended threshold operating values, products can be subjected to higher loads upon request. The bending radius is measured through the inside of the hose arch. The right to make technical modifications is reserved. All values determined at 20°C and are approx. data. Additional technical data at www.norres.com/en/technology/

Overpressure and underpressure are recommended threshold operating values, products can be subjected to higher loads upon request. The bending radius is measured through the inside of the hose arch. Additional technical data at www.norres.com. The right to make technical modifications is reserved. All values determined at 20°C and are approx. data.

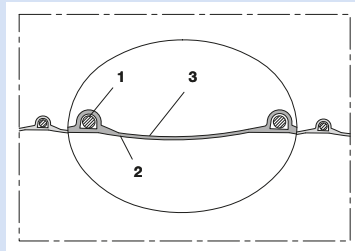
Accessories



CLAMP 211



CONNECT 270-271



TPE hose, light (up to +150°C)

Applications

- flexible hose/ ducting for hot and cold gases and for dust, powder, fibres
- granulate/ plastic dryer, hot air dryer
- film blowing machine, cooling air at the extrusion tool
- air supply: UV dryer, IR dryer
- textile industry, steam soaking: steam iron, industrial ironing machine, smoothing iron
- bus, utility vehicle, caravan/ trailer, mobile home/ camper/ RV, boat, ship/ vessel/ marine, yacht: ventilation, heating
- heating system/ heater: fresh air supply

Properties

- light weight
- highly flexible + compressible
- very good heat resistance
- good resistance to oil, gasoline and chemicals
- good resistance to alkalis and acids
- conforms to RoHS guideline

Temperature Range

- 40°C to 125°C
- short time to 150°C

Design, Material

PROTAPE® tape hose
1. spring steel wire integrated in wall

- 2. wall: thermoplastic rubber (TPE)
- 3. wall thickness 0,4 mm approx.

Delivery variants

- further diameters and lengths available on request
- black (standard)
- special colours: full coloured
- customer-specific branding
- ID 1"/25mm – 12"/305mm compressed packed in poly bag (low transportation cost / risk, minimum storage size), ID315 – 500mm not compressed

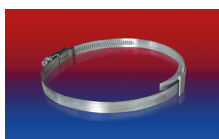
I.D.	O.D.	Over-pressure	Under-pressure	Bending Radius	Weight	Dimensions in Stock	Order No.
in / mm	mm	bar	bar	mm	kg/m	m	
2 / 50-51	58	0,235	0,105	33	0,230	10	320-0050-0000
2,36 / 60	68	0,195	0,090	38	0,260	10	320-0060-0000
- / 70	78	0,170	0,075	43	0,300	10	320-0070-0000
3 / 75-76	83	0,160	0,070	46	0,330	10	320-0075-0000
- / 80	88	0,150	0,065	48	0,360	10	320-0080-0000
4 / 100-102	109	0,120	0,055	58	0,520	10	320-0100-0000
5 / 125-127	134	0,095	0,045	71	0,640	10	320-0125-0000
5,5 / 140	148	0,085	0,040	78	0,710	10	320-0140-0000
6 / 150-152	159	0,080	0,025	83	0,760	10	320-0150-0000
6,3 / 160	168	0,075	0,025	88	0,800	10	320-0160-0000
7 / 178-180	188	0,065	0,020	98	0,910	10	320-0180-0000
8 / 200-203	210	0,060	0,020	108	1,010	10	320-0200-0000
- / 250	258	0,050	0,015	133	1,210	10	320-0250-0000

Overpressure and underpressure are recommended threshold operating values, products can be subjected to higher loads upon request. The bending radius is measured through the inside of the hose arch. The right to make technical modifications is reserved. All values determined at 20°C and are approx. data. Additional technical data at www.norres.com/en/technology/

Accessories



CLAMP 212



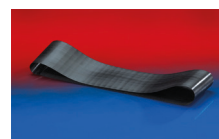
CLAMP 210 BRIDGE CLAMP



CLAMP 217



CLAMP 213



CONNECT 228

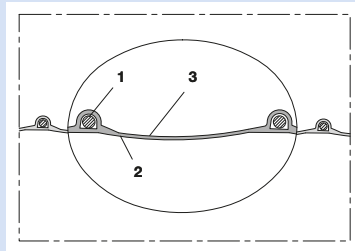


CONNECT 223

Overpressure and underpressure are recommended threshold operating values, products can be subjected to higher loads upon request. The bending radius is measured through the inside of the hose arch. Additional technical data at www.norres.com. The right to make technical modifications is reserved. All values determined at 20°C and are approx. data.



CONNECT 270-271



TPE hose, light, fabric reinforced (up to +125°C)

Applications

- flexible hose/ ducting for hot and cold gases
- granulate/ plastic dryer, hot air dryer
- film blowing machine, cooling air at the extrusion tool
- air supply: UV dryer, IR dryer
- textile industry, steam soaking: steam iron, industrial ironing machine, smoothing iron
- bus, utility vehicle, caravan/ trailer, mobile home/ camper/ RV, boat, ship/ vessel/ marine, yacht: ventilation, heating
- paper mill, paper and pulp industry: waste water, air extraction
- heating system/ heater: fresh air supply

Properties

- fabric reinforced
- light weight
- highly flexible + compressible
- very good heat resistance
- good resistance to oil, gasoline and chemicals
- good resistance to alkalis and acids
- conforms to RoHS guideline

Temperature Range

- 40°C to 110°C
- short time to 125°C

Design, Material

PROTAPE® tape hose

- spring steel wire integrated in wall
- fabric-reinforced tape; wall: EPDM/ PP coated fabric
- wall thickness 0,4 mm approx.

Delivery variants

- further diameters and lengths available on request
- black (standard)
- special colours: full coloured
- customer-specific branding

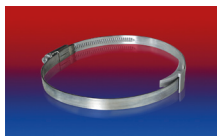
I.D.	O.D.	Over-pressure	Under-pressure	Bending Radius	Weight	Dimensions in Stock	Order No.
in / mm	mm	bar	bar	mm	kg/m	m	
2 / 50-51	55	0,265	0,216	33	0,21	7,5 15	321-0050-0000
3 / 75-76	80	0,180	0,117	49	0,31	7,5 15	321-0075-0000
4 / 100-102	108	0,130	0,072	65	0,62	7,5 15	321-0100-0000
5 / 125-127	133	0,110	0,050	81	0,78	7,5 15	321-0125-0000
6 / 150-152	158	0,090	0,050	98	0,93	7,5 15	321-0150-0000
8 / 200-203	208	0,065	0,033	120	1,24	7,5 15	321-0200-0000
- / 250	259	0,055	0,015	150	1,75	7,5 15	321-0250-0000
- / 300	309	0,045	0,011	180	2,10	7,5 15	321-0300-0000

Overpressure and underpressure are recommended threshold operating values, products can be subjected to higher loads upon request. The bending radius is measured through the inside of the hose arch. The right to make technical modifications is reserved. All values determined at 20°C and are approx. data. Additional technical data at www.norres.com/en/technology/

Accessories



CLAMP 212



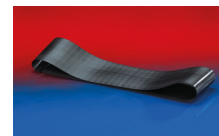
CLAMP 210 BRIDGE CLAMP



CLAMP 217



CLAMP 213



CONNECT 228

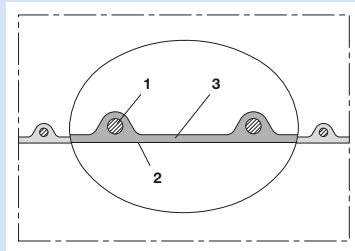
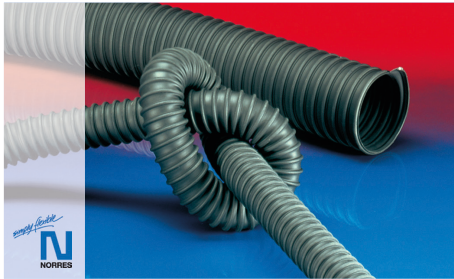


CONNECT 223



CONNECT 270-271

Overpressure and underpressure are recommended threshold operating values, products can be subjected to higher loads upon request. The bending radius is measured through the inside of the hose arch. Additional technical data at www.norres.com. The right to make technical modifications is reserved. All values determined at 20°C and are approx. data.



TPE hose, medium-heavy (up to +150°C)

Applications

- flexible hose/ ducting for hot and cold gases and for powder, bulk material, granulate
- granulate/ plastic dryer, hot air dryer
- film blowing machine, cooling air at the extrusion tool
- air supply: UV dryer, IR dryer
- textile industry, steam soaking: steam iron, industrial ironing machine, smoothing iron
- bus, utility vehicle, caravan/ trailer, mobile home/ camper/ RV, boat, ship/ vessel/ marine, yacht: ventilation, heating
- compressor, side channel blower, vacuum pump, pressure pump, pump

- paper mill, paper and pulp industry: waste water, air extraction
- heating system/ heater: fresh air supply

Properties

- medium-heavy duty
- very good heat resistance
- good resistance to oil, gasoline and chemicals
- good resistance to alkalis and acids
- conforms to RoHS guideline

Temperature Range

- 40°C to 125°C
- short time to 150°C

Design, Material

AIRDUC® profile hose

- spring steel wire firmly embedded in wall
- wall: thermoplastic rubber (TPE)
- wall thickness 0,8 mm approx.

Delivery variants

- further diameters and lengths available on request
- black (standard)
- special colours: full coloured
- customer-specific branding

I.D.	O.D.	Over-pressure	Under-pressure	Bending Radius	Weight	Dimensions in Stock	Order No.
in / mm	mm	bar	bar	mm	kg/m	m	
- / 30	38	0,930	0,195	23	0,210	10	363-0030-0000
1,25 / 32	40	0,870	0,190	24	0,250	10	363-0032-0000
1,5 / 38	46	0,740	0,175	27	0,290	10	363-0038-0000
- / 40	48	0,705	0,170	28	0,300	10	363-0040-0000
1,75 / 44-45	53	0,630	0,160	31	0,330	10	363-0045-0000
2 / 50-51	58	0,565	0,150	33	0,370	10	363-0050-0000
2,36 / 60	68	0,475	0,115	38	0,450	10	363-0060-0000
2,5 / 63-65	73	0,440	0,100	41	0,490	10	363-0065-0000
- / 70	78	0,410	0,085	43	0,530	10	363-0070-0000
3 / 75-76	83	0,380	0,080	46	0,560	10	363-0075-0000
- / 80	88	0,360	0,070	48	0,590	10	363-0080-0000
3,5 / 89-90	98	0,320	0,065	53	0,670	10	363-0090-0000
4 / 100-102	108	0,290	0,050	58	0,740	10	363-0100-0000
- / 110	118	0,260	0,045	63	0,810	10	363-0110-0000
5 / 125-127	133	0,230	0,035	71	0,910	10	363-0125-0000
- / 130	138	0,220	0,035	73	0,950	10	363-0130-0000
6 / 150-152	158	0,195	0,035	83	1,100	10	363-0150-0000
7 / 178-180	188	0,160	0,025	98	1,290	10	363-0180-0000
8 / 200-203	208	0,145	0,025	108	1,440	10	363-0200-0000
- / 225	233	0,130	0,020	121	1,630	10	363-0225-0000
- / 250	258	0,115	0,020	133	1,810	10	363-0250-0000

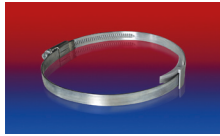
Overpressure and underpressure are recommended threshold operating values, products can be subjected to higher loads upon request. The bending radius is measured through the inside of the hose arch. The right to make technical modifications is reserved. All values determined at 20°C and are approx. data. Additional technical data at www.norres.com/en/technology/

Overpressure and underpressure are recommended threshold operating values, products can be subjected to higher loads upon request. The bending radius is measured through the inside of the hose arch. Additional technical data at www.norres.com. The right to make technical modifications is reserved. All values determined at 20°C and are approx. data.

Accessories



CLAMP 212



CLAMP 210 BRIDGE CLAMP



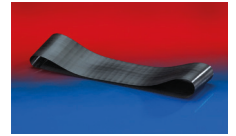
CLAMP 212 EC



CLAMP 217



CLAMP 213



CONNECT 228

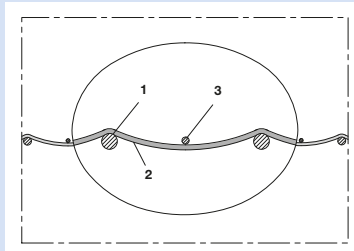


CONNECT 223



CONNECT 270-271

Overpressure and underpressure are recommended threshold operating values, products can be subjected to higher loads upon request. The bending radius is measured through the inside of the hose arch. Additional technical data at www.norres.com. The right to make technical modifications is reserved. All values determined at 20°C and are approx. data.



Neoprene hose, single-layer, leak-proof (up to +150°C)

Applications

- flexible hose/ ducting for hot and cold gases
- granulate/ plastic dryer, hot air dryer
- film blowing machine, cooling air at the extrusion tool
- air supply: UV dryer, IR dryer
- bus, utility vehicle, caravan/ trailer, mobile home/ camper/ RV, boat, ship/ vessel/ marine, yacht: ventilation, heating

Properties

- fibre reinforced

- highly flexible
- very good heat resistance
- conforms to RoHS guideline

Temperature Range

- -35°C to 135°C
- short time to 150°C

Design, Material

Neoprene hose
 1. spring steel wire
 2. fabric-reinforced tape; wall: Neopren coated glass

- fabric
- 3. cord as reinforcement

Delivery variants

- further diameters and lengths available on request

I.D.	O.D.	Over-pressure	Under-pressure	Bending Radius	Weight	Dimensions in Stock	Further Production Lengths	Order No.
in / mm	mm	bar	bar	mm	kg/m	m	m	
- / 13	15	1,800	0,580	9	0,050	-	4	390-0013-0000
3/4 / 19	21	1,800	0,580	12	0,080	4	-	390-0019-0000
- / 22	24	1,800	0,580	13	0,090	4	-	390-0022-0000
1 / 25	29	1,500	0,580	17	0,120	4	-	390-0025-0000
1,25 / 32	35	1,500	0,580	19	0,130	4	-	390-0032-0000
1,5 / 38	42	1,500	0,580	23	0,170	4	-	390-0038-0000
- / 41	45	1,500	0,570	25	0,180	-	4	390-0041-0000
1,75 / 44-45	48	1,500	0,560	26	0,190	4	-	390-0044-0000
2 / 50-51	55	1,500	0,500	30	0,250	4	-	390-0051-0000
2,25 / 57	61	1,300	0,500	33	0,280	4	-	390-0057-0000
2,5 / 63-65	67	1,300	0,500	36	0,300	4	-	390-0063-0000
- / 70	74	1,200	0,500	39	0,400	4	-	390-0070-0000
3 / 75-76	80	1,100	0,390	42	0,410	4	-	390-0076-0000
- / 80	84	1,100	0,390	44	0,420	4	-	390-0080-0000
3,2 / 83	87	1,100	0,390	46	0,470	4	-	390-0083-0000
3,5 / 89-90	93	1,100	0,380	49	0,500	4	-	390-0089-0000
- / 95	99	1,100	0,380	52	0,540	4	-	390-0095-0000
4 / 100-102	106	1,100	0,300	55	0,570	4	-	390-0102-0000
- / 108	113	1,000	0,300	59	0,680	4	-	390-0108-0000
4,5 / 114	119	1,000	0,300	62	0,730	4	-	390-0114-0000
- / 121	126	0,900	0,290	66	0,760	4	-	390-0121-0000
5 / 125-127	132	0,900	0,210	69	0,810	4	-	390-0127-0000
5,5 / 140	145	0,900	0,200	75	0,890	4	-	390-0140-0000
6 / 150-152	157	0,800	0,180	81	1,050	4	-	390-0152-0000
6,3 / 160	165	0,700	0,160	85	1,100	-	4	390-0160-0000
6,5 / 165	170	0,700	0,150	88	1,180	-	4	390-0165-0000
7 / 178-180	183	0,600	0,140	94	1,210	4	-	390-0178-0000
8 / 200-203	208	0,600	0,100	107	1,380	4	-	390-0203-0000
10 / 254	259	0,400	0,100	132	1,650	4	-	390-0254-0000
12 / 305	310	0,100	0,070	158	2,000	4	-	390-0305-0000

Overpressure and underpressure are recommended threshold operating values, products can be subjected to higher loads upon request. The bending radius is measured through the inside of the hose arch. Additional technical data at www.norres.com. The right to make technical modifications is reserved. All values determined at 20°C and are approx. data.

Overpressure and underpressure are recommended threshold operating values, products can be subjected to higher loads upon request. The bending radius is measured through the inside of the hose arch. The right to make technical modifications is reserved. All values determined at 20°C and are approx. data. Additional technical data at www.norres.com/en/technology/

Accessories



CLAMP 208



CLAMP 211

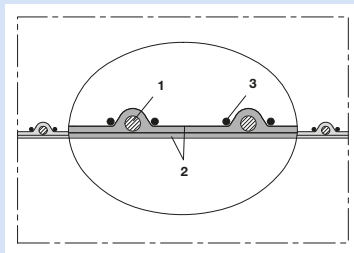


CONNECT 228



CONNECT 270-271

Overpressure and underpressure are recommended threshold operating values, products can be subjected to higher loads upon request. The bending radius is measured through the inside of the hose arch. Additional technical data at www.norres.com. The right to make technical modifications is reserved. All values determined at 20°C and are approx. data.



Neoprene hose, double-layer, leak-proof (up to +150°C)

Applications

- flexible hose/ ducting for hot and cold gases
- granulate/ plastic dryer, hot air dryer
- film blowing machine, cooling air at the extrusion tool
- air supply: UV dryer, IR dryer
- bus, utility vehicle, caravan/ trailer, mobile home/ camper/ RV, boat, ship/ vessel/ marine, yacht: ventilation, heating

Properties

- fibre reinforced

- very good heat resistance
- conforms to RoHS guideline

Temperature Range

- 35°C to 135°C
- short time to 150°C

Design, Material

- Neoprene hose
- spring steel wire integrated in wall
 - fabric-reinforced tape; wall: Neopren coated glass fabric
 - cord as reinforcement

3. cord as reinforcement

Delivery variants

- further diameters and lengths available on request

I.D.	O.D.	Over-pressure	Under-pressure	Bending Radius	Weight	Dimensions in Stock	Further Production Lengths	Order No.
in / mm	mm	bar	bar	mm	kg/m	m	m	
- / 13	16	3,000	0,740	10	0,070	-	4	390-0013-2005
3/4 / 19	22	3,000	0,730	13	0,110	4	-	390-0019-2005
- / 22	25	3,000	0,720	14	0,170	4	-	390-0022-2005
1 / 25	30	2,800	0,710	18	0,190	4	-	390-0025-2005
1,25 / 32	36	2,700	0,650	20	0,280	4	-	390-0032-2005
1,5 / 38	43	2,600	0,600	24	0,310	4	-	390-0038-2005
- / 41	46	2,600	0,590	26	0,315	-	4	390-0041-2005
1,75 / 44-45	49	2,600	0,580	27	0,320	4	-	390-0044-2005
2 / 50-51	56	2,600	0,520	31	0,360	4	-	390-0051-2005
2,25 / 57	62	2,500	0,480	34	0,430	4	-	390-0057-2005
2,5 / 63-65	68	2,400	0,460	37	0,490	4	-	390-0063-2005
- / 70	75	2,100	0,440	40	0,540	4	-	390-0070-2005
3 / 75-76	81	2,100	0,430	43	0,580	4	-	390-0076-2005
- / 80	85	2,100	0,420	45	0,610	4	-	390-0080-2005
3,2 / 83	88	2,100	0,410	47	0,630	4	-	390-0083-2005
3,5 / 89-90	94	2,000	0,400	50	0,690	4	-	390-0089-2005
- / 95	100	1,900	0,370	53	0,730	4	-	390-0095-2005
4 / 100-102	107	1,900	0,350	56	0,770	4	-	390-0102-2005
- / 108	114	1,800	0,330	60	0,810	4	-	390-0108-2005
4,5 / 114	120	1,500	0,300	63	0,850	4	-	390-0114-2005
- / 121	127	1,500	0,240	67	0,890	4	-	390-0121-2005
5 / 125-127	133	1,400	0,230	70	0,930	4	-	390-0127-2005
5,5 / 140	146	1,300	0,200	76	1,000	4	-	390-0140-2005
6 / 150-152	158	1,200	0,170	82	1,200	4	-	390-0152-2005
6,3 / 160	166	1,100	0,160	86	1,280	-	4	390-0160-2005
6,5 / 165	171	1,100	0,140	89	1,380	-	4	390-0165-2005
7 / 178-180	184	1,000	0,120	95	1,430	4	-	390-0178-2005
8 / 200-203	209	0,700	0,090	108	1,650	4	-	390-0203-2005
10 / 254	260	0,500	0,070	133	2,090	4	-	390-0254-2005
12 / 305	311	0,500	0,070	159	2,610	4	-	390-0305-2005

Overpressure and underpressure are recommended threshold operating values, products can be subjected to higher loads upon request. The bending radius is measured through the inside of the hose arch. Additional technical data at www.norres.com. The right to make technical modifications is reserved. All values determined at 20°C and are approx. data.



Overpressure and underpressure are recommended threshold operating values, products can be subjected to higher loads upon request. The bending radius is measured through the inside of the hose arch. The right to make technical modifications is reserved. All values determined at 20°C and are approx. data. Additional technical data at www.norres.com/en/technology/

Accessories



CLAMP 208



CLAMP 211

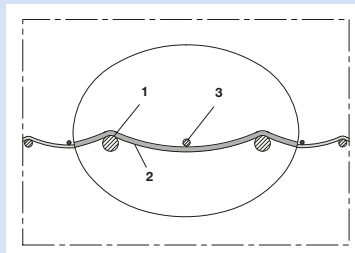


CONNECT 228



CONNECT 270-271

Overpressure and underpressure are recommended threshold operating values, products can be subjected to higher loads upon request. The bending radius is measured through the inside of the hose arch. Additional technical data at www.norres.com. The right to make technical modifications is reserved. All values determined at 20°C and are approx. data.



Silicone hose, single-layer, leak-proof (up to +280°C)

Applications

- flexible hose/ ducting for hot and cold gases
- granulate/ plastic dryer, hot air dryer
- film blowing machine, cooling air at the extrusion tool
- air supply: UV dryer, IR dryer
- clean room ventilation, semiconductor production machine

- highly flexible
- very good heat resistance
- conforms to RoHS guideline

Temperature Range

- 70°C to 260°C
- short time to 280°C

- 2. fabric-reinforced tape; wall: Silicone coated glass fabric
- 3. cord as reinforcement

Delivery variants

- further diameters and lengths available on request

Properties

- fibre reinforced

Design, Material

- Silicone hose
- 1. spring steel wire

I.D.	O.D.	Over-pressure	Under-pressure	Bending Radius	Weight	Dimensions in Stock	Further Production Lengths	Order No.
in / mm	mm	bar	bar	mm	kg/m	m	m	
- / 13	15	1,800	0,580	9	0,050	-	4	391-0013-0000
3/4 / 19	21	1,800	0,580	12	0,080	4	-	391-0019-0000
- / 22	24	1,800	0,580	13	0,090	4	-	391-0022-0000
1 / 25	29	1,500	0,580	17	0,120	4	-	391-0025-0000
1,25 / 32	35	1,500	0,580	19	0,130	4	-	391-0032-0000
1,5 / 38	42	1,500	0,580	23	0,170	4	-	391-0038-0000
- / 41	45	1,500	0,570	25	0,180	-	4	391-0041-0000
1,75 / 44-45	48	1,500	0,560	26	0,190	4	-	391-0044-0000
2 / 50-51	55	1,500	0,500	30	0,250	4	-	391-0051-0000
2,25 / 57	61	1,300	0,500	33	0,280	4	-	391-0057-0000
2,5 / 63-65	67	1,300	0,500	36	0,300	4	-	391-0063-0000
- / 70	74	1,200	0,500	39	0,400	4	-	391-0070-0000
3 / 75-76	80	1,100	0,390	42	0,410	4	-	391-0076-0000
- / 80	84	1,100	0,390	44	0,440	4	-	391-0080-0000
3,2 / 83	87	1,100	0,390	46	0,470	4	-	391-0083-0000
3,5 / 89-90	93	1,100	0,380	49	0,500	4	-	391-0089-0000
- / 95	99	1,100	0,380	52	0,540	4	-	391-0095-0000
4 / 100-102	106	1,100	0,300	55	0,570	4	-	391-0102-0000
- / 108	113	1,000	0,300	59	0,680	4	-	391-0108-0000
4,5 / 114	119	1,000	0,300	62	0,730	4	-	391-0114-0000
- / 121	126	0,900	0,290	66	0,760	4	-	391-0121-0000
5 / 125-127	132	0,900	0,210	69	0,810	4	-	391-0127-0000
5,5 / 140	145	0,900	0,200	75	0,890	4	-	391-0140-0000
6 / 150-152	157	0,800	0,180	81	1,050	4	-	391-0152-0000
6,3 / 160	165	0,700	0,160	85	1,100	-	4	391-0160-0000
6,5 / 165	170	0,700	0,150	88	1,180	-	4	391-0165-0000
7 / 178-180	183	0,600	0,140	94	1,210	4	-	391-0178-0000
8 / 200-203	208	0,600	0,100	107	1,380	4	-	391-0203-0000
10 / 254	259	0,400	0,100	132	1,650	4	-	391-0254-0000
12 / 305	310	0,100	0,070	158	2,000	4	-	391-0305-0000

Overpressure and underpressure are recommended threshold operating values, products can be subjected to higher loads upon request. The bending radius is measured through the inside of the hose arch. Additional technical data at www.norres.com. The right to make technical modifications is reserved. All values determined at 20°C and are approx. data.

Overpressure and underpressure are recommended threshold operating values, products can be subjected to higher loads upon request. The bending radius is measured through the inside of the hose arch. The right to make technical modifications is reserved. All values determined at 20°C and are approx. data. Additional technical data at www.norres.com/en/technology/

Accessories



CLAMP 208



CLAMP 211

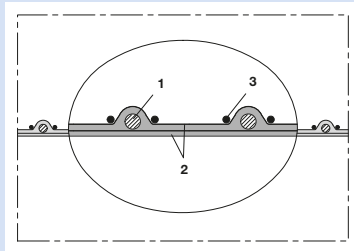
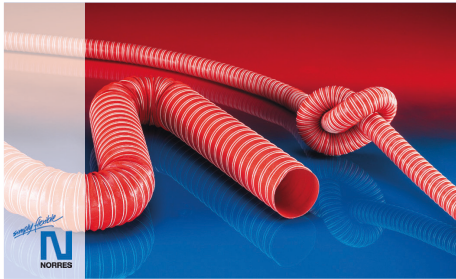


CONNECT 228



CONNECT 270-271

Overpressure and underpressure are recommended threshold operating values, products can be subjected to higher loads upon request. The bending radius is measured through the inside of the hose arch. Additional technical data at www.norres.com. The right to make technical modifications is reserved. All values determined at 20°C and are approx. data.



Silicone hose, double-layer, leak-proof (up to +280°C)

Applications

- flexible hose/ ducting for hot and cold gases
- granulate/ plastic dryer, hot air dryer
- film blowing machine, cooling air at the extrusion tool
- air supply: UV dryer, IR dryer
- clean room ventilation, semiconductor production machine

Properties

- fibre reinforced

- very good heat resistance
- conforms to RoHS guideline

Temperature Range

- 70°C to 260°C
- short time to 280°C

Design, Material

- Silicone hose
- spring steel wire integrated in wall
 - fabric-reinforced tape; wall: Silicone coated glass

- fabric
- cord as reinforcement

Delivery variants

- further diameters and lengths available on request

I.D.	O.D.	Over-pressure	Under-pressure	Bending Radius	Weight	Dimensions in Stock	Further Production Lengths	Order No.
in / mm	mm	bar	bar	mm	kg/m	m	m	
- / 13	16	3,000	0,740	10	0,070	-	4	391-0013-2005
3/4 / 19	22	3,000	0,730	13	0,110	4	-	391-0019-2005
- / 22	25	3,000	0,720	14	0,170	4	-	391-0022-2005
1 / 25	30	2,800	0,710	18	0,190	4	-	391-0025-2005
1,25 / 32	36	2,700	0,650	20	0,280	4	-	391-0032-2005
1,5 / 38	43	2,600	0,600	24	0,310	4	-	391-0038-2005
- / 41	46	2,600	0,590	26	0,315	-	4	391-0041-2005
1,75 / 44-45	49	2,600	0,580	27	0,320	4	-	391-0044-2005
2 / 50-51	56	2,600	0,520	31	0,360	4	-	391-0051-2005
2,25 / 57	62	2,500	0,480	34	0,430	4	-	391-0057-2005
2,5 / 63-65	68	2,400	0,460	37	0,490	4	-	391-0063-2005
- / 70	75	2,100	0,440	40	0,540	4	-	391-0070-2005
3 / 75-76	81	2,100	0,430	43	0,580	4	-	391-0076-2005
- / 80	85	2,100	0,420	45	0,610	4	-	391-0080-2005
3,2 / 83	88	2,100	0,410	47	0,630	4	-	391-0083-2005
3,5 / 89-90	94	2,000	0,400	50	0,690	4	-	391-0089-2005
- / 95	100	1,900	0,370	53	0,730	4	-	391-0095-2005
4 / 100-102	107	1,900	0,350	56	0,770	4	-	391-0102-2005
- / 108	114	1,800	0,330	60	0,810	4	-	391-0108-2005
4,5 / 114	120	1,500	0,300	63	0,850	4	-	391-0114-2005
- / 121	127	1,500	0,240	67	0,890	4	-	391-0121-2005
5 / 125-127	133	1,400	0,230	70	0,930	4	-	391-0127-2005
5,5 / 140	146	1,300	0,200	76	1,000	4	-	391-0140-2005
6 / 150-152	158	1,200	0,170	82	1,200	4	-	391-0152-2005
6,3 / 160	166	1,100	0,160	86	1,280	-	4	391-0160-2005
6,5 / 165	171	1,100	0,140	89	1,380	-	4	391-0165-2005
7 / 178-180	184	1,000	0,120	95	1,430	4	-	391-0178-2005
8 / 200-203	209	0,700	0,090	108	1,650	4	-	391-0203-2005
10 / 254	260	0,500	0,070	133	2,090	4	-	391-0254-2005
12 / 305	311	0,500	0,070	159	2,610	4	-	391-0305-2005

Overpressure and underpressure are recommended threshold operating values, products can be subjected to higher loads upon request. The bending radius is measured through the inside of the hose arch. Additional technical data at www.norres.com. The right to make technical modifications is reserved. All values determined at 20°C and are approx. data.

Overpressure and underpressure are recommended threshold operating values, products can be subjected to higher loads upon request. The bending radius is measured through the inside of the hose arch. The right to make technical modifications is reserved. All values determined at 20°C and are approx. data. Additional technical data at www.norres.com/en/technology/

Accessories



CLAMP 208



CLAMP 211

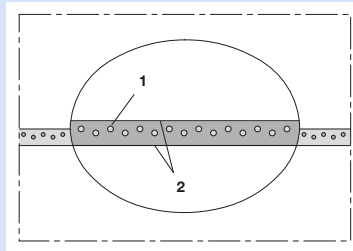


CONNECT 228



CONNECT 270-271

Overpressure and underpressure are recommended threshold operating values, products can be subjected to higher loads upon request. The bending radius is measured through the inside of the hose arch. Additional technical data at www.norres.com. The right to make technical modifications is reserved. All values determined at 20°C and are approx. data.



Abrasion resistant polyurethane hose/
tubing, fabric reinforced pressure hose

Applications

- flexible hose/ ducting for liquids and for gases and for abrasive solids
- food industry, pharmaceutical industry: foodstuff, pharmaceutical
- conveying of dry foods e.g. rice, cereals, sugar, milk powder, powders, coffee, tea, grains, flour, frozen foods
- injection moulding tool cooling, cooling water supply
- powder spraying, powder coating: e.g. printing industry
- industrial washing machine: washing water hose
- compressed air hose, cooling water hose, water hose
- fabric reinforced hose/ braided hose
- heating hose: interior hose for media transfer

Properties

- fabric reinforced
- highly flexible
- highly abrasion resistant
- crush resistant
- Food grade wall, complies with: EU-Directive 10/2011 and EC 1935/2004 and the latest EU-Directive 2015/174
- odourless and tasteless
- microbe and hydrolysis resistant
- good resistance to oil, gasoline and chemicals
- very good low temperature flexibility
- manufacturing process acc. GMP EC 2023/2006
- conforms to RoHS guideline

Temperature Range

- 40°C to 90°C

- short time to 125°C

Design, Material

NORFLEX® design

- fabric reinforced wall
- smooth interior and exterior; wall: special premium ether-polyurethane (Pre-PUR®)

Delivery variants

- further diameters and lengths available on request
- transparent (standard)
- special colours: full coloured
- customer-specific branding

I.D.	Wall Thickness	O.D.	Over-pressure	Bending Radius	Weight	Dimensions in Stock	Further Production Lengths	Order No.
in / mm	mm	mm	bar	mm	kg/m	m	m	
1/8 / 2,9	1,4	5,7	20,000	14	0,022	50	-	441-9029-0000
- / 4	2,0	8,0	20,000	13	0,045	50	-	441-9040-0000
1/4 / 6	2,0	10,0	16,000	22	0,060	50	-	441-9060-0000
1/4 / 6	3,0	12,0	20,000	22	0,100	-	50	441-9060-2175
- / 6,5	1,8	10,0	16,000	22	0,054	-	50	441-9065-0000
- / 7	1,5	10,0	14,000	27	0,047	-	50	441-9070-0000
5/16 / 8	2,0	12,0	16,000	26	0,075	50	-	441-9080-0000
- / 8,5	2,0	12,5	16,000	36	0,078	-	50	441-9085-0000
3/8 / 9,5	2,0	13,5	14,000	45	0,086	50	-	441-9095-0000
3/8 / 10	2,3	14,5	12,000	55	0,103	50	-	441-9100-0000
- / 11	2,5	16,0	12,000	55	0,126	-	50	441-9110-0000
1/2 / 13	3,0	19,0	10,000	79	0,179	50	-	441-9130-0000
3/4 / 19	3,0	25,0	8,000	116	0,248	50	-	441-9190-0000

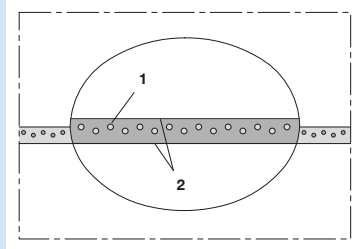
Overpressure and underpressure are recommended threshold operating values, products can be subjected to higher loads upon request. The bending radius is measured through the inside of the hose arch. The right to make technical modifications is reserved. All values determined at 20°C and are approx. data. Additional technical data at www.norres.com/en/technology/

Accessories



CLAMP 208

Overpressure and underpressure are recommended threshold operating values, products can be subjected to higher loads upon request. The bending radius is measured through the inside of the hose arch. Additional technical data at www.norres.com. The right to make technical modifications is reserved. All values determined at 20°C and are approx. data.



Abrasion resistant polyurethane hose/
tubing for industrial robots, fabric reinforced
high pressure hose

Applications

- flexible hose/ ducting for liquids and for gases and for abrasive solids
- injection moulding tool cooling, cooling water supply
- agricultural industry: high pressure spraying hose e.g. for pesticides
- compressed air hose, cooling water hose, water hose
- fabric reinforced hose/ braided hose
- industrial robot, robotic, welding equipment, welding robot, welding gun: welding spot resistant hose, hose for dresspack for media as water and air
- heating hose: interior hose for media transfer

Properties

- fabric reinforced
- highly flexible
- highly abrasion resistant
- crush resistant
- good resistance to oil, gasoline and chemicals
- conforms to RoHS guideline

Temperature Range

- 35°C to 80°C

Design, Material

NORFLEX® design

- fabric reinforced wall
- smooth interior and exterior; wall: special premium polyurethane (Pre-PUR®)

Delivery variants

- further diameters and lengths available on request
- transparent (standard)
- grey (standard)
- black (standard)
- blue (standard)
- red (standard)
- yellow (standard)
- green (standard)
- special colours: full coloured
- customer-specific branding

I.D.	O.D.	Over- pressure	min. Burst Pressure	Bending Radius	Weight	Dimensions in Stock	Further Production Lengths	Order No.
in / mm	mm	bar	bar	mm	kg/m	m	m	
Colour transparent								
1/4 / 6,4	12,7	20,000	80	22	0,128	-	50	441-9064-0005
3/8 / 9,4	16,0	20,000	80	55	0,153	-	50	441-9094-0005
1/2 / 12,8	19,5	20,000	80	69	0,230	-	50	441-9128-0005
5/8 / 16	24,5	20,000	75	117	0,308	-	50	441-9160-0005
3/4 / 19,5	28,5	20,000	50	140	0,411	-	50	441-9190-0005
Colour blue								
1/4 / 6,4	12,7	20,000	80	22	0,128	-	50	441-9064-0400
3/8 / 9,4	16,0	20,000	80	55	0,153	50	-	441-9094-0400
1/2 / 12,8	19,5	20,000	80	69	0,230	50	-	441-9128-0400
5/8 / 16	24,5	20,000	75	117	0,308	-	50	441-9160-0400
3/4 / 19,5	28,5	20,000	50	140	0,411	50	-	441-9190-0400
Colour grey								
1/4 / 6,4	12,7	20,000	80	22	0,128	-	50	441-9064-0401
3/8 / 9,4	16,0	20,000	80	55	0,153	-	50	441-9094-0401
1/2 / 12,8	19,5	20,000	80	69	0,230	-	50	441-9128-0401
5/8 / 16	24,5	20,000	75	117	0,308	-	50	441-9160-0401
3/4 / 19,5	28,5	20,000	50	140	0,411	-	50	441-9190-0401
Colour black								
1/4 / 6,4	12,7	20,000	80	22	0,128	-	50	441-9064-0402
3/8 / 9,4	16,0	20,000	80	55	0,153	50	-	441-9094-0402
1/2 / 12,8	19,5	20,000	80	69	0,230	50	-	441-9128-0402
5/8 / 16	24,5	20,000	75	117	0,308	-	50	441-9160-0402
3/4 / 19,5	28,5	20,000	50	140	0,411	-	50	441-9190-0402

Overpressure and underpressure are recommended threshold operating values, products can be subjected to higher loads upon request. The bending radius is measured through the inside of the hose arch. Additional technical data at www.norres.com. The right to make technical modifications is reserved. All values determined at 20°C and are approx. data.



I.D.	O.D.	Over-pressure	min. Burst Pressure	Bending Radius	Weight	Dimensions in Stock	Further Production Lengths	Order No.
in / mm	mm	bar	bar	mm	kg/m	m	m	
Colour red								
1/4 / 6,4	12,7	20,000	80	22	0,128	-	50	441-9064-0403
3/8 / 9,4	16,0	20,000	80	55	0,153	50	-	441-9094-0403
1/2 / 12,8	19,5	20,000	80	69	0,230	50	-	441-9128-0403
5/8 / 16	24,5	20,000	75	117	0,308	-	50	441-9160-0403
3/4 / 19,5	28,5	20,000	50	140	0,411	50	-	441-9190-0403
Colour green								
1/4 / 6,4	12,7	20,000	80	22	0,128	-	50	441-9064-0404
3/8 / 9,4	16,0	20,000	80	55	0,153	50	-	441-9094-0404
1/2 / 12,8	19,5	20,000	80	69	0,230	50	-	441-9128-0404
5/8 / 16	24,5	20,000	75	117	0,308	-	50	441-9160-0404
3/4 / 19,5	28,5	20,000	50	140	0,411	50	-	441-9190-0404
Colour yellow								
1/4 / 6,4	12,7	20,000	80	22	0,128	-	50	441-9064-0405
3/8 / 9,4	16,0	20,000	80	55	0,153	-	50	441-9094-0405
1/2 / 12,8	19,5	20,000	80	69	0,230	-	50	441-9128-0405
5/8 / 16	24,5	20,000	75	117	0,308	-	50	441-9160-0405
3/4 / 19,5	28,5	20,000	50	140	0,411	-	50	441-9190-0405

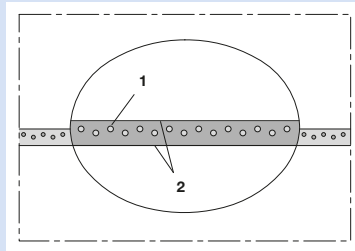
I.D. tolerance: < 13 mm +0,15 / -0,15 mm; > 13 mm +0,2 / -0,2 mm; O.D. tolerance: < 19,5 mm: +0,25 / -0,25 mm; > 19,5 mm: +0,25 / -0,25 mm; Overpressure and underpressure are recommended threshold operating values, products can be subjected to higher loads upon request. The bending radius is measured through the inside of the hose arch. The right to make technical modifications is reserved. All values determined at 20°C and are approx. data. Additional technical data at www.norres.com/en/technology/

Accessories



CLAMP 208

Overpressure and underpressure are recommended threshold operating values, products can be subjected to higher loads upon request. The bending radius is measured through the inside of the hose arch. Additional technical data at www.norres.com. The right to make technical modifications is reserved. All values determined at 20°C and are approx. data.



PVC hose/ tubing, fabric reinforced pressure hose

Applications

- flexible hose/ ducting for liquids and for gases
- injection moulding tool cooling, cooling water supply
- caravan/ trailer, mobile home/ camper/ RV, boat, ship/ vessel, yachts: sanitary installation, water supply
- industrial washing machine: washing water hose
- compressed air hose, cooling water hose, water hose
- fabric reinforced hose/ braided hose
- vacuum lifting equipment, vacuum handling system

- heating hose: interior hose for media transfer

Properties

- fabric reinforced
- highly flexible
- crush resistant
- good resistance to alkalis and acids
- good resistance to chemicals
- conforms to RoHS guideline

Temperature Range

- 20°C to 60°C

Design, Material

NORFLEX® design

1. fabric reinforced wall
2. smooth interior and exterior; wall: soft PVC

Delivery variants

- further diameters and lengths available on request
- transparent (standard)
- special colours: full coloured
- customer-specific branding

I.D.	Wall Thickness	O.D.	Over-pressure	Bending Radius	Weight	Dimensions in Stock	Order No.
in / mm	mm	mm	bar	mm	kg/m	m	
- / 4	3,0	10,0	20,000	13	0,086	50	440-9040-0000
- / 5	3,0	11,0	17,000	18	0,098	50	440-9050-0000
1/4 / 6	3,0	12,0	15,000	22	0,110	50	440-9060-0000
5/16 / 8	3,0	14,0	15,000	26	0,135	50	440-9080-0000
- / 9	3,0	15,0	12,000	31	0,147	50	440-9090-0000
3/8 / 10	3,0	16,0	10,000	45	0,159	50	440-9100-0000
- / 12	4,5	21,0	12,000	59	0,303	50	440-9120-0000
- / 12	3,0	18,0	10,000	59	0,184	50	440-9120-2175
1/2 / 12,5	3,0	18,5	10,000	59	0,190	50	440-9125-0000
1/2 / 13	3,5	20,0	10,000	69	0,236	50	440-9130-0000
5/8 / 16	4,0	24,0	10,000	92	0,327	50	440-9160-0000
3/4 / 19	4,0	27,0	7,000	116	0,376	50	440-9190-0000
1 / 25	4,5	34,0	6,000	138	0,542	25	440-9250-0000
1 1/8 / 30	4,0	38,0	5,000	185	0,555	25	440-9300-0000
1 1/4 / 32	5,0	42,0	5,000	234	0,755	25	440-9320-0000

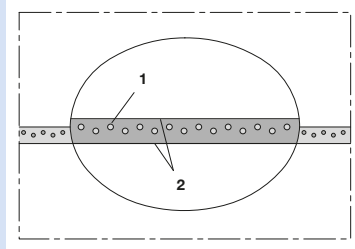
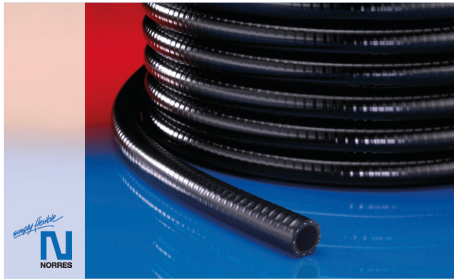
Overpressure and underpressure are recommended threshold operating values, products can be subjected to higher loads upon request. The bending radius is measured through the inside of the hose arch. The right to make technical modifications is reserved. All values determined at 20°C and are approx. data. Additional technical data at www.norres.com/en/technology/

Accessories



CLAMP 208

Overpressure and underpressure are recommended threshold operating values, products can be subjected to higher loads upon request. The bending radius is measured through the inside of the hose arch. Additional technical data at www.norres.com. The right to make technical modifications is reserved. All values determined at 20°C and are approx. data.



PVC hose/ tubing, fabric reinforced high pressure hose

Applications

- flexible hose/ ducting for liquids and for gases
- injection moulding tool cooling, cooling water supply
- agricultural industry: irrigation, fertilizers, insecticides
- agricultural industry: high pressure spraying hose e.g. for pesticides
- industrial washing machine: washing water hose
- compressed air hose, cooling water hose, water hose
- fabric reinforced hose/ braided hose
- industrial robot, robotic, welding equipment, welding robot, welding gun: welding spot resistant

hose, hose for dresspack for media as water and air

- heating hose: interior hose for media transfer

Properties

- fabric reinforced
- highly flexible
- crush resistant
- good resistance to alkalis and acids
- good resistance to chemicals
- conforms to RoHS guideline

Temperature Range

- 20°C to 60°C

Design, Material

NORFLEX® design

1. fabric reinforced wall
2. wall interior and exterior smooth; wall: soft PVC

Delivery variants

- further diameters and lengths available on request
- black (standard)
- special colours: full coloured
- customer-specific branding

I.D.	O.D.	Over-pressure	Bending Radius	Weight	Production Lengths	Order No.
in / mm	mm	bar	mm	kg/m	m	
5/16 / 8	14	20	26	0,135	50	440-9080-0500
3/8 / 10	16	18	45	0,159	50	440-9100-0500
1/2 / 12,7	19	16	60	0,210	50	440-9127-0500
5/8 / 16	24	14	92	0,327	50	440-9160-0500
3/4 / 19	27	12	116	0,376	50	440-9190-0500
1 / 25	34	10	138	0,542	50	440-9250-0500
1 1/4 / 32	42	8	234	0,755	50	440-9320-0500

Overpressure and underpressure are recommended threshold operating values, products can be subjected to higher loads upon request. The bending radius is measured through the inside of the hose arch. The right to make technical modifications is reserved. All values determined at 20°C and are approx. data. Additional technical data at www.norres.com/en/technology/

Accessories



CLAMP 208

Overpressure and underpressure are recommended threshold operating values, products can be subjected to higher loads upon request. The bending radius is measured through the inside of the hose arch. Additional technical data at www.norres.com. The right to make technical modifications is reserved. All values determined at 20°C and are approx. data.



● Manufacture, warehouse, distribution ● Warehouse, distribution



NORRES Schlauchtechnik GmbH

Am Stadthafen 12-16
45881 Gelsenkirchen
GERMANY
Phone +49 209 8 00 00 0
Fax +49 209 8 00 00 99 99
E-Mail info@norres.de
www.norres.com

NORRES UK LTD

Unit 10, Mount Street Business Park
Nechells, Birmingham, B7 5QU
UNITED KINGDOM
Phone +44 121 328 5426
E-Mail info@norres.co.uk
www.norres.co.uk

NORRES France SARL

27 D rue des Blancs Monts
Z.A.C. Les Blancs Monts
51350 Cormontreuil
FRANCE
Phone +33 3 26 35 95 41
E-Mail info@norres.fr
www.norres.fr

NORRES North America Inc.

2520 Foundation Drive
South Bend, IN 46628
UNITED STATES
Phone +1 574 232 90 61
Toll Free +1 855 NORRES 0
E-Mail info@norres.us
www.norres.us

NORRES Polska Sp. z o.o.

ul. Rolna 9
Sady k. Poznania
62-080 Tarnowo Podgórne
POLAND
Phone +48 61 293 31 80
E-Mail info@norres.pl
www.norres.pl

NORRES Czech s.r.o

Novoveská 552/5j
709 00 Ostrava, Mariánské Hory
CZECH REPUBLIC
Phone +420 555 501 902
E-Mail info@norres.cz
www.norres.cz

NORRES Hose Technology (Shanghai) Co., Ltd.

诺锐软管科技（上海）有限公司
上海浦东新区上丰路955号4幢一层西首
West of Floor 1, Building 4, No. 955,
Shang Feng Rd., Pudong, 201201 Shanghai
P.R. CHINA
Phone +86 21 50308958
E-Mail info@norres.cn
www.norres.cn www.sh-norres.com

NORRES Taiwan Co., Ltd.

台灣諾銳有限公司
桃園市蘆竹區經國路892號5樓
5F., No. 892, Jingguo Rd., Luzhu Dist.
Taoyuan City 33858
TAIWAN (R.O.C.)
Phone +886 3 356 0696
E-Mail info@norres.tw
www.norres.tw

